

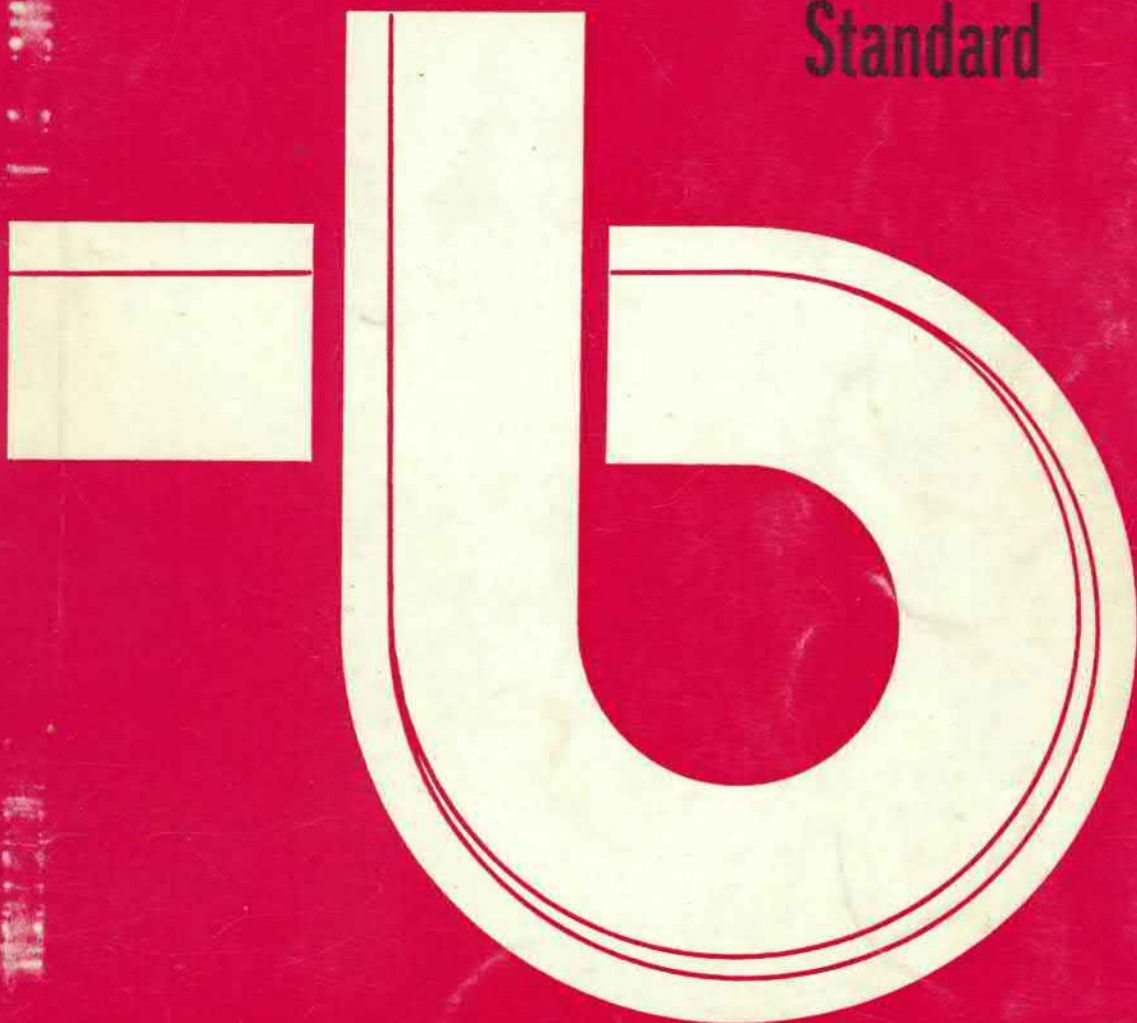
# HONDA



## 50

Model PF 50

Standard



# 3

## PARTS LIST

HONDA GENUINE PARTS

**HONDA**  
**GENUINE PARTS**



# **PF 50 STANDARD**



# Parts List

for

# HONDA PF50 STANDARD

## Foreword

This parts list contains all the spare parts for the PF 50 Standard type for Belgium, France, Netherland and United Kingdom, and is to be used for ordering spare parts.

The frame number must be forwarded together with your parts order. This is necessary in order to verify that the parts being ordered are applicable to the model for which they are intended.

Supplements are issued for PF 50 rear cushion, PF 50 Novio and PF 50 Novio rear cushion models. In these supplements only specific parts are indicated. For all other parts, please refer to this PF 50 standard booklet.

This is the third revision. The revised edition can be identified by the figure number 3 on the cover on this booklet. To make sure you are checking the latest parts list, please contact your nearest distributor.

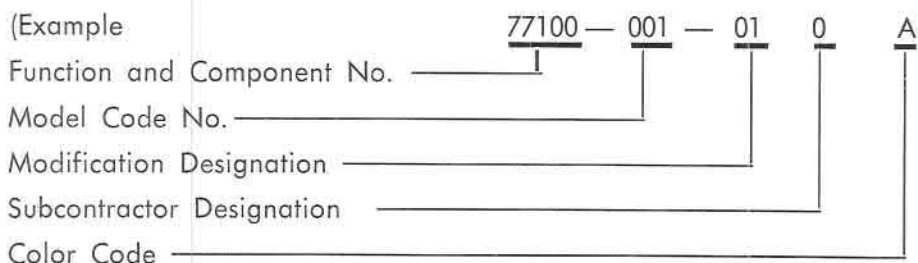
HONDA MOTOR  
October 31 st, 1972

# INSTRUCTION FOR USE OF PARTS LIST

## DESCRIPTION OF PARTS LIST

### 1. Make-up of the Part Number.

The following example is the definition of part number.



### 2. Abbreviations.

The abbreviations used in this parts list are as follows.

ASSY.	. . . . .	Assembly
COMP.	. . . . .	Complete
hex.	. . . . .	hexagonal
22T	. . . . .	22 theet

### 3. Dimensions.

All dimensions are in millimeters except for the steel balls and wheels.

Parts	Example	Interpretation
Bolt (Screw)	6 x 12	6 mm diameter, 12 mm length
Pin	8 x 14	8 mm diameter, 14 mm length
O-Ring	9.5 x 1.6	9.5 mm diameter, 1.6 mm thickness
Oil seal	14 x 24 x 5	14 mm inside diameter, 24 mm outside diameter, 5 mm thickness
Tube	5 x 130	5 mm inside diameter, 130 mm length

### 4. Quantity used.

In the column « QTY » is shown the quantity of parts used in the respective group.

**5. Applicable Serial Number.**

If there is a production change to a part, the frame serial number to which this part become effective will be indicated in the « Remarks » column.

**6. Parts with o marks.**

Those parts marked o in the text are items either newly introduced or changed in this issue.

**7. Engine serial number is located on the left crank case below the crank pedal.**

**8. Area Code :**

Used for England (GB)

Used for Belgium (B)

Used for France (F)

Used for Netherland (NL)

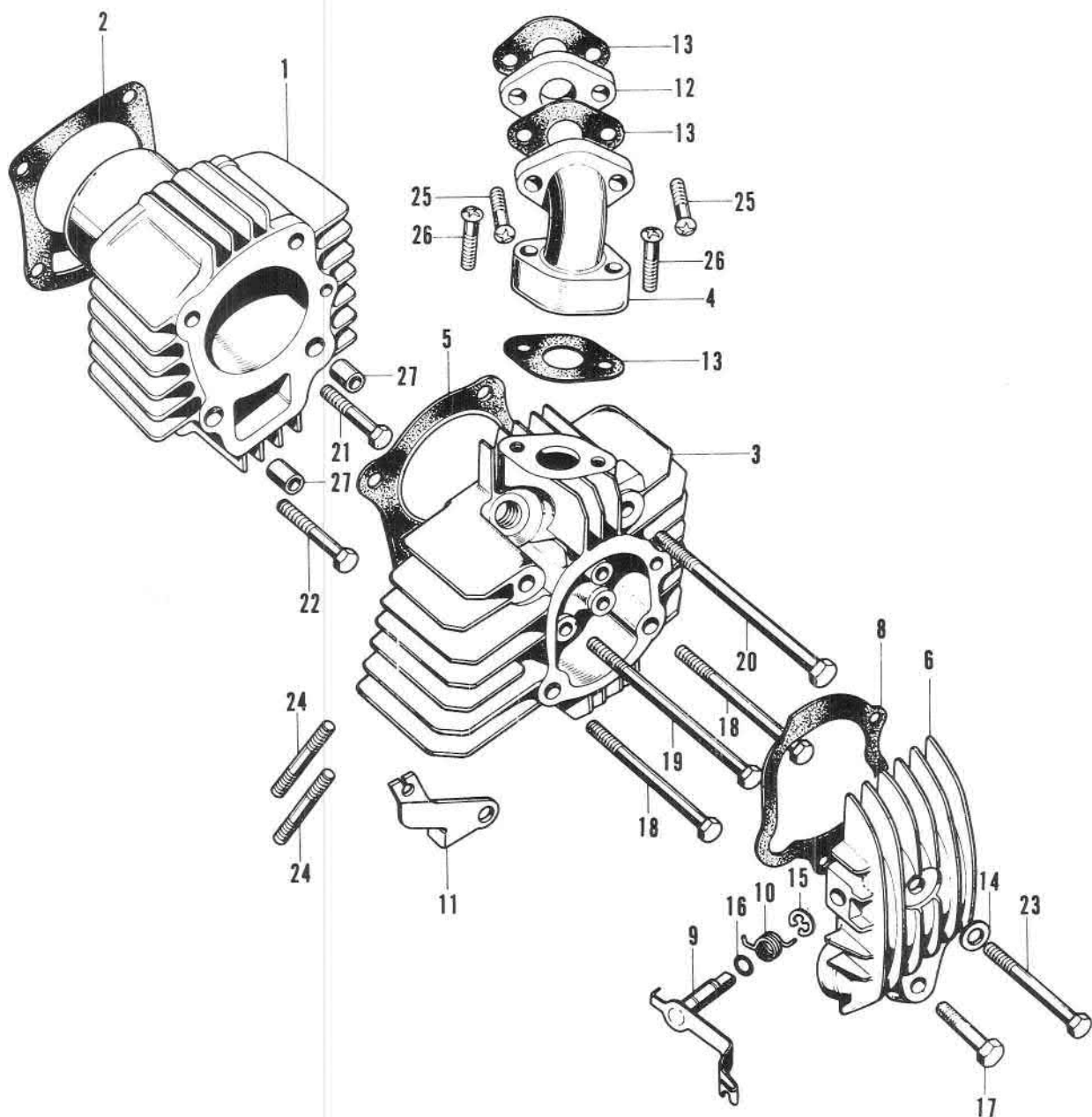
Used for Denmark (DK)

Used for Italy (I)

**9. Not available separately =**

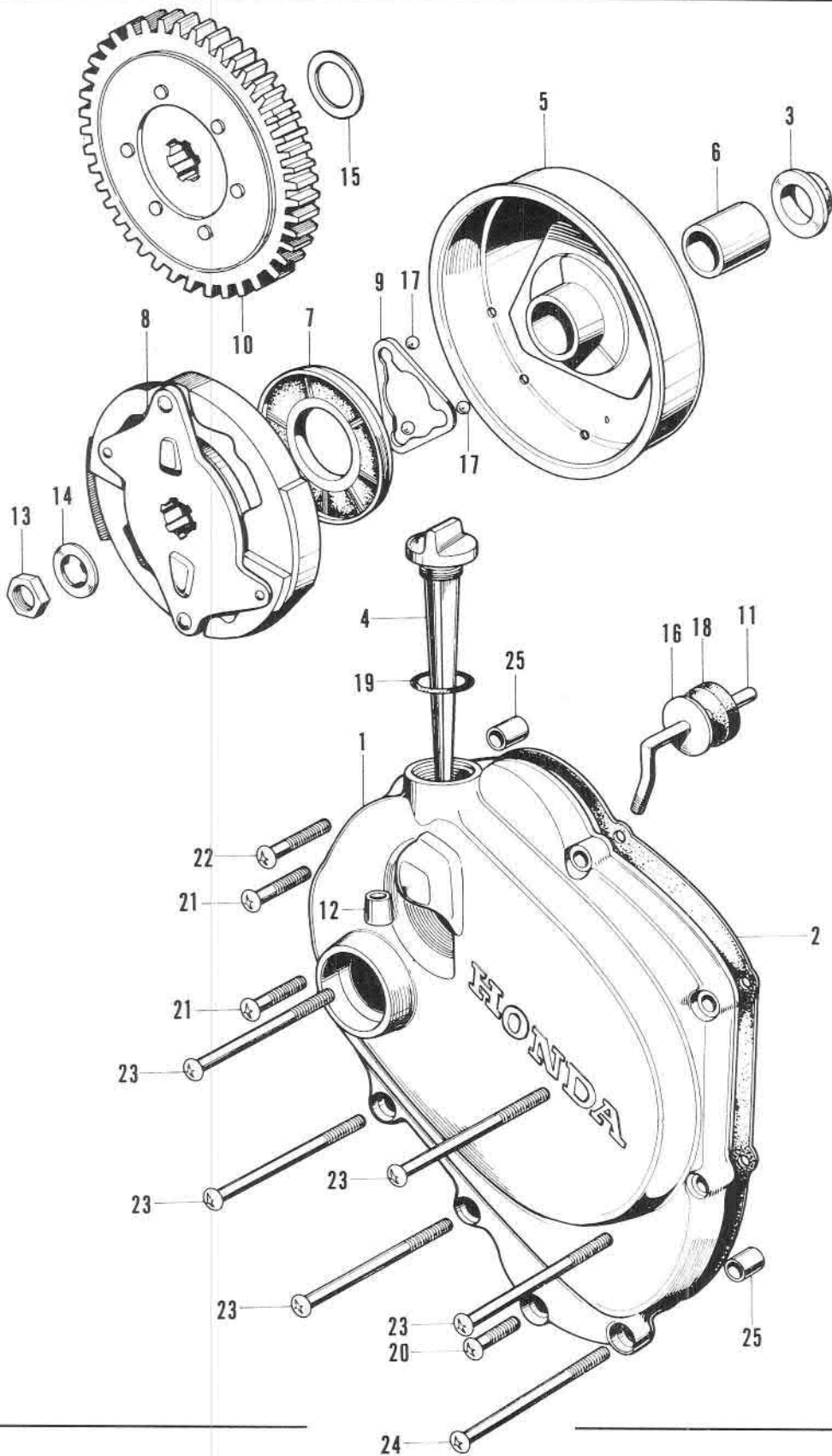
Niet afzonderlijk verkrijgbaar. — Non livrable séparément.

Nicht separat lieferbar.

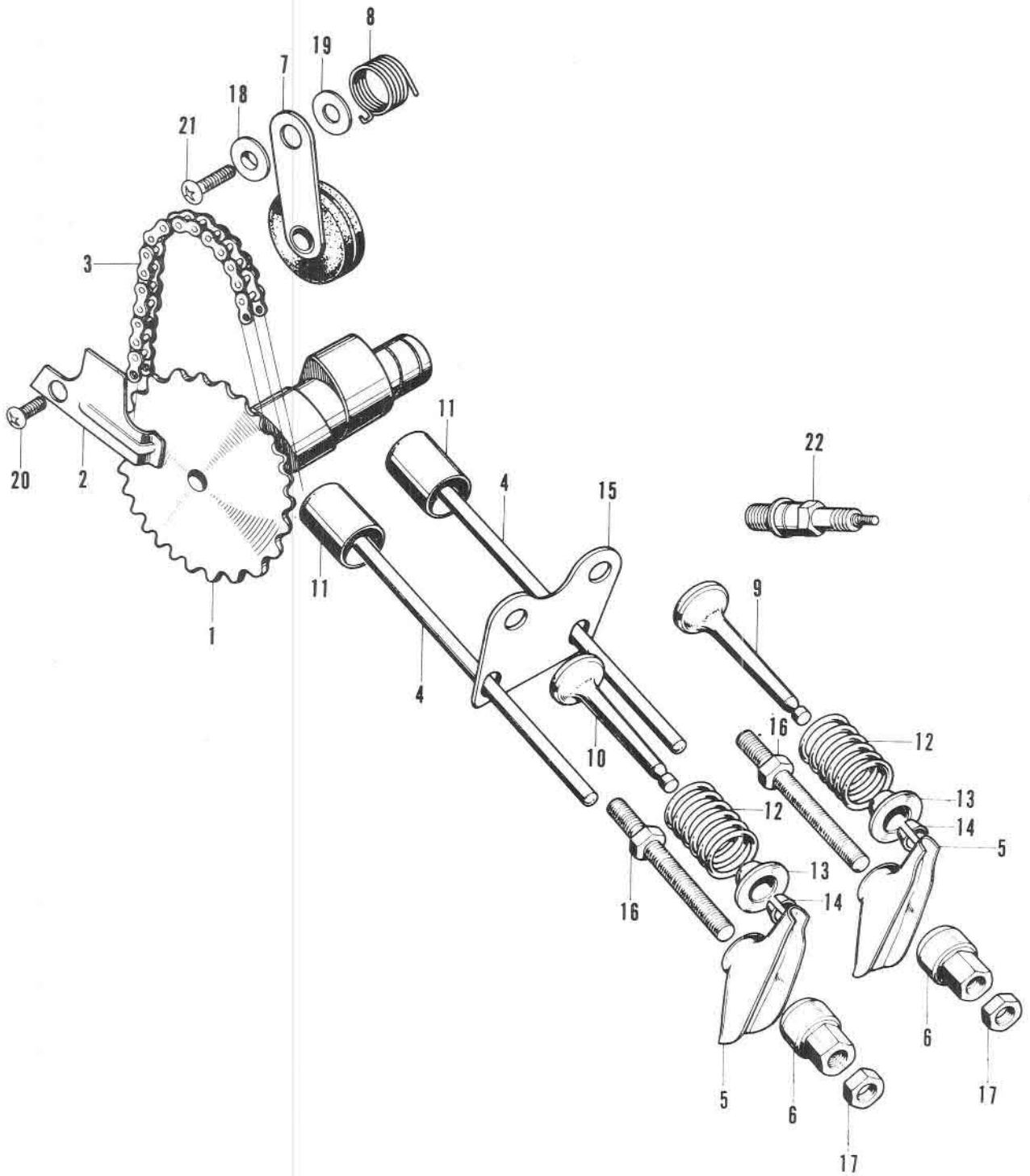


Ref. N°	Part N°	Description	Q T Y	Remarks
1	12100-081-010	<b>CYLINDER</b> . . . . .	1	
2	12191-081-000	<b>GASKET</b> , cylinder . . . . .	1	
3	12200-081-000	<b>HEAD</b> , cylinder . . . . .	1	C00001-C07226
	12200-081-010	<b>HEAD</b> , cylinder . . . . .	1	C07226
4	12210-081-000	<b>PIPE COMP.</b> , inlet . . . . .	1	
5	12251-081-000	<b>GASKET</b> , cylinder head . . . . .	1	
6	12301-081-000	<b>COVER</b> , cylinder head . . . . .	1	C00001-C07101
	12301-081-040	<b>COVER</b> , cylinder head . . . . .	1	C07101-C07226
	12301-081-050	<b>COVER</b> , cylinder head . . . . .	1	C07226
8	12391-081-000	<b>GASKET</b> , cylinder cover head . . . . .	1	C00001-C07226
	12391-081-010	<b>GASKET</b> , cylinder cover head . . . . .	1	C07226
9	14920-081-020	<b>SHAFT COMP.</b> , decomp. . . . .	1	
10	14935-081-010	<b>SPRING</b> , decomp. return . . . . .	1	
11	14945-081-010	<b>BRACKET</b> , decomp. . . . .	1	
12	16265-081-000	<b>INSULATOR</b> , carburettor . . . . .	1	
13	16267-081-000	<b>GASKET</b> , inlet pipe . . . . .	3	
14	90478-700-000	<b>WASHER A</b> , 6 mm . . . . .	1	
15	90607-081-000	<b>CIR-CLIP</b> , 7 mm . . . . .	1	
16	91301-216-000	<b>O-RING</b> , 5.5 x 1.5 . . . . .	1	
17	92000-06020	<b>BOLT</b> , hex., 6 x 20 . . . . .	1	
18	92000-06071	<b>BOLT</b> , hex., 6 x 71 . . . . .	2	
19	92000-06100	<b>BOLT</b> , hex., 6 x 100 . . . . .	1	
20	92000-06112	<b>BOLT</b> , hex., 6 x 112 . . . . .	1	
21	92100-06028	<b>BOLT</b> , hex., 6 x 28 . . . . .	1	
22	92100-06032	<b>BOLT</b> , hex., 6 x 32 . . . . .	1	
23	92100-06056	<b>BOLT</b> , hex., 6 x 58 . . . . .	1	
24	92700-06030	<b>BOLT</b> , stud. 6 x 30 . . . . .	1	
25	93500-06020	<b>SCREW</b> , pan, 6 x 20 . . . . .	2	
26	93500-06025	<b>SCREW</b> , pan, 6 x 25 . . . . .	2	
27	94301-08120	<b>PIN</b> , knock, 8 x 12 . . . . .	2	

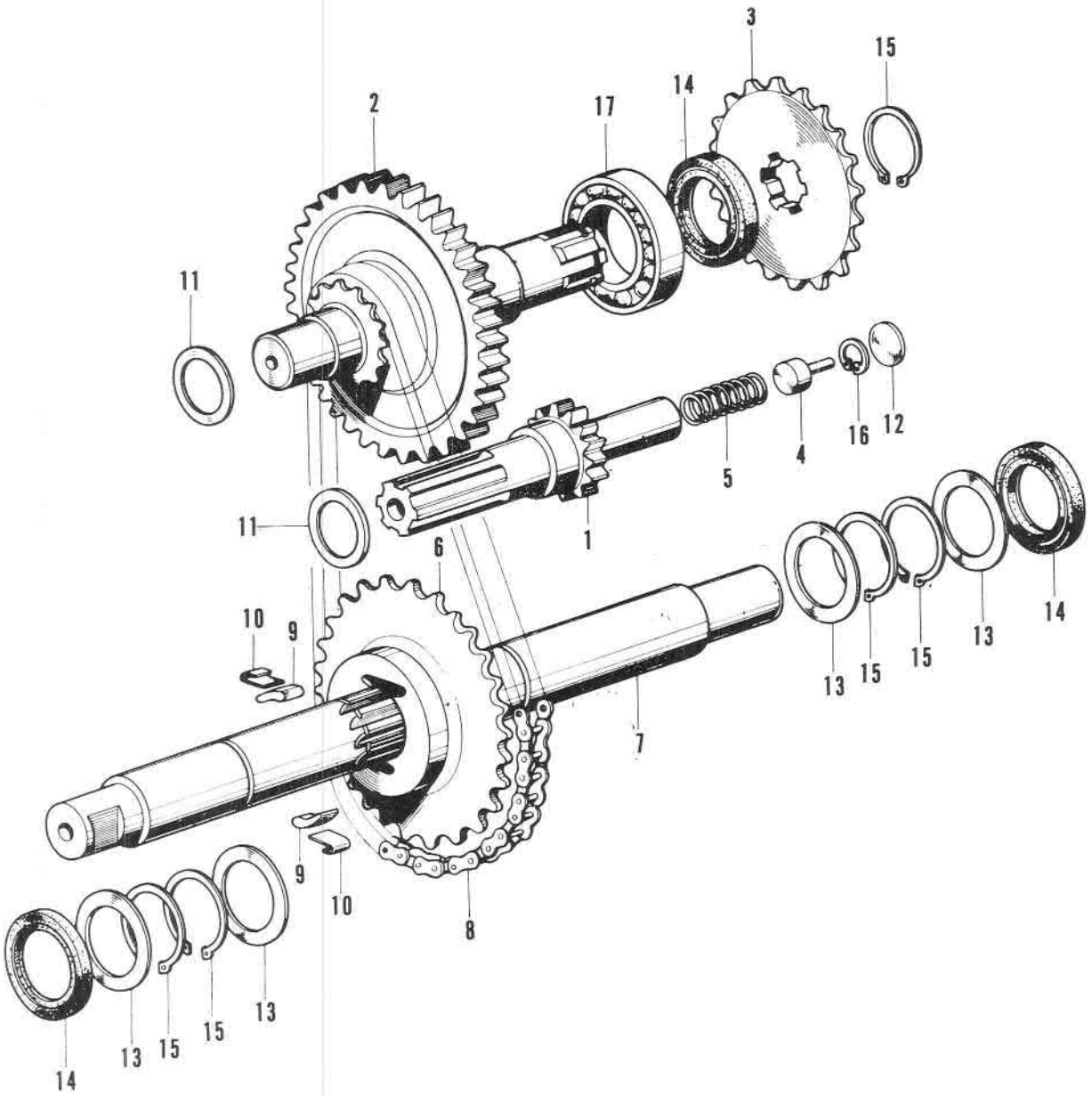




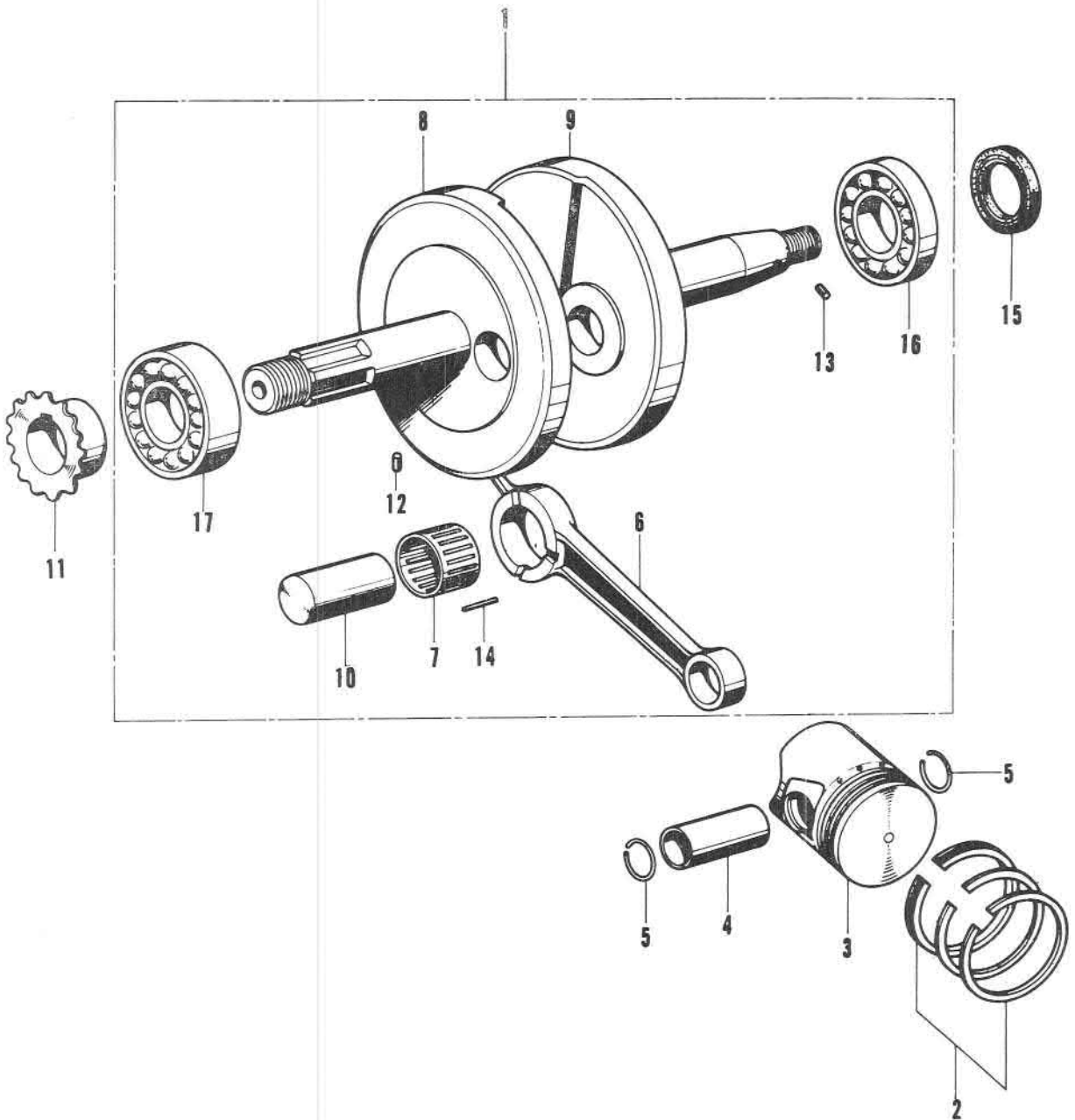
Ref. N°	Part N°	Description	Q T Y	Remarks
1	11331-081-000	<b>COVER, R.</b> crank case . . . . .	1	
2	11394-081-010	<b>GASKET, R.</b> crank case cover . . . . .	1	
3	14315-081-000	<b>COLLAR,</b> timing sprocket distance . . . . .	1	
4	15650-040-000	<b>OIL,</b> gauge . . . . .	1	
5	22100-081-000	<b>OUTER COMB.,</b> clutch (18T) . . . . .	1	
6	22131-081-000	<b>GUIDE,</b> clutch center . . . . .	1	
7	22201-044-050	<b>PLATE,</b> clutch friction . . . . .	1	
8	22300-081-000	<b>PLATE ASSY.,</b> drive . . . . .	1	
9	22802-044-000	<b>RETAINER,</b> ball . . . . .	1	
10	23110-081-020	<b>GEAR COMP.,</b> primary driven (54T) . . . . .	1	
11	24611-081-010	<b>SLIDER,</b> main shaft . . . . .	1	
12	24612-063-000	<b>CAP,</b> free pawl slider . . . . .	1	
13	90231-816-000	<b>NUT,</b> lock, 14 mm . . . . .	1	
14	90434-816-000	<b>WASHER,</b> lock, 14 mm . . . . .	1	
15	90451-081-000	<b>WASHER A,</b> thrustr, 17 mm . . . . .	1	
16	90456-081-000	<b>WASHER,</b> 5 x 30 . . . . .	1	
17	90921-044-000	<b>BALL,</b> clutch . . . . .	3	
18	91212-063-005	<b>OIL-SEAL,</b> 5 x 30 x 6 . . . . .	1	
19	91311-044-000	<b>O-RING,</b> 18.2 $\varnothing$ . . . . .	1	
20	93500-06020	<b>SCREW,</b> pan, 6 x 20 . . . . .	1	
21	93500-06025	<b>SCREW,</b> pan. 6 x 25 . . . . .	2	
22	93500-06032	<b>SCREW,</b> pan, 6 x 32 . . . . .	1	
23	93500-06075	<b>SCREW,</b> pan. 6 x 75 . . . . .	5	
24	93500-06085	<b>SCREW,</b> pan, 6 x 85 . . . . .	1	
25	94301-08120	<b>PIN,</b> knock, 8 x 12 . . . . .	2	



Ref. N°	Part N°	Description	Q T Y	Remarks
1	14101-081-010	SHAFT, cam (30T) . . . . .	1	
2	14105-081-010	PLATE, cam shaft set . . . . .	1	
3	14401-081-000	CHAIN, cam (42 LINKS) . . . . .	1	
4	14411-081-000	ROD, push . . . . .	2	
5	14431-081-000	ARM, valve rocker . . . . .	2	
6	14451-081-000	PIVOT, rocker arm . . . . .	2	
7	14500-081-000	TENSIONER COMP., cam chain . . . . .	1	
8	14541-081-000	SPRING, tensioner . . . . .	1	
9	14711-081-000	VALVE, inlet . . . . .	1	C00001-CE08351
	14711-081-010	VALVE, inlet . . . . .	1	CE08351
10	14721-081-000	VALVE, exhaust . . . . .	1	C00001-CE08351
	14721-081-010	VALVE, exhaust . . . . .	1	CE08351
11	14731-081-000	LIFTER, valve . . . . .	2	
12	14751-081-000	SPRING, valve . . . . .	2	
13	14771-081-000	RETAINER, valve spring . . . . .	2	C00001-CE08351
	14771-081-010	RETAINER, valve spring . . . . .	2	CE08351
14	14781-081-000	COTTER, valve . . . . .	2	C00001-CE08351
	14781-001-010	COTTER, valve . . . . .	4	CE08351
15	14791-081-000	PLATE, push rod guide . . . . .	1	
16	90012-081-010	BOLT, pivot . . . . .	2	
17	90206-023-000	NUT, pivot adjuster . . . . .	2	
18	90445-081-000	WASHER, 6 mm . . . . .	1	
19	90511-216-670	WASHER, 6 x 17 . . . . .	1	
20	93500-06012	SCREW, pan, 6 x 12 . . . . .	1	
21	93500-06016	SCREW, pan, 6 x 16 . . . . .	1	
22	98056-57710	PLUG, sparking . . . . .	1	

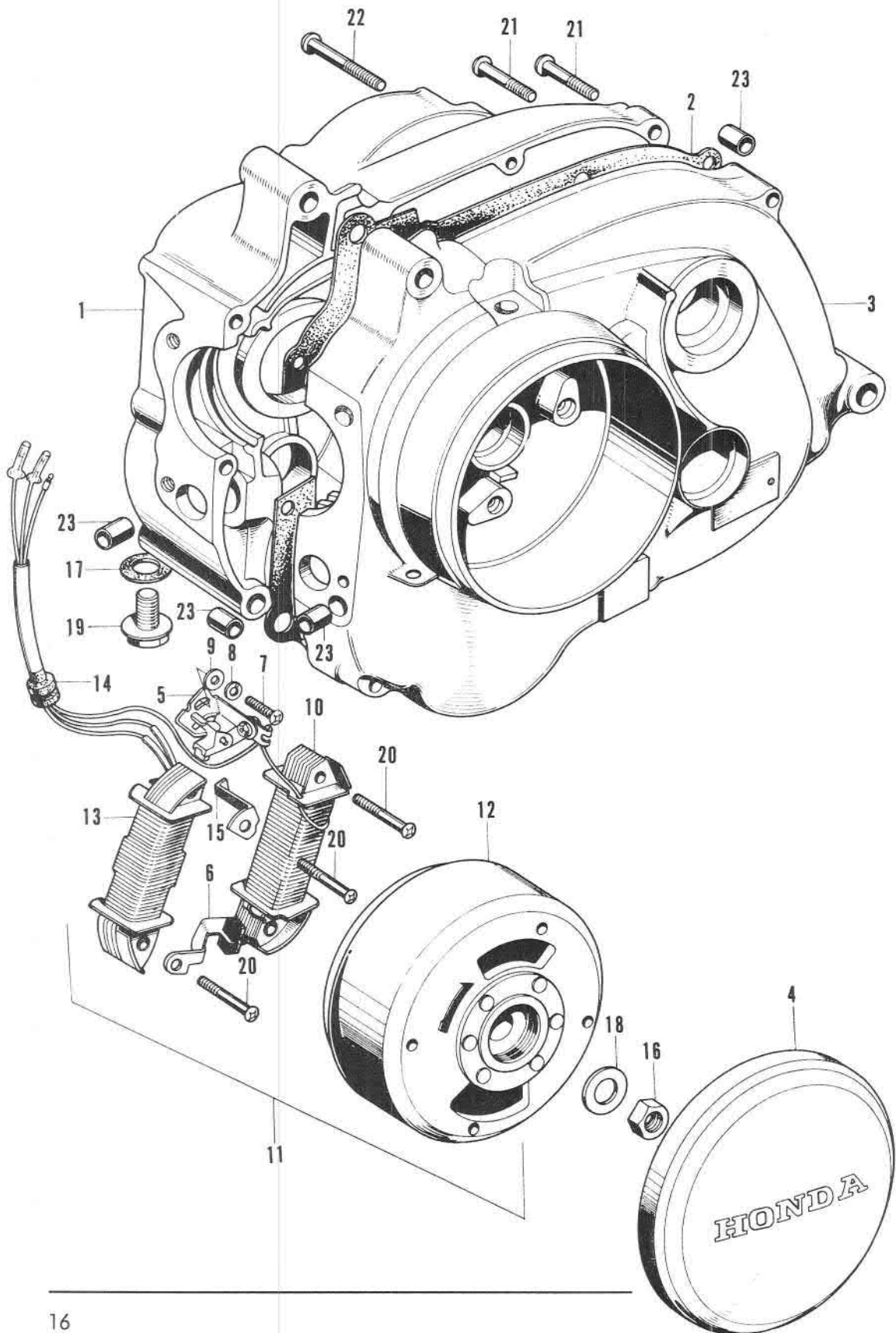


Ref. N°	Part N°	Description	Q T Y	Remarks
1	23211-081-000	<b>SHAFT</b> , main, transmission . . . . .	1	
2	23220-081-010	<b>SHAFT</b> , counter, transmission . . . . .	1	
3	23801-081-000	<b>SPROCKET</b> , drive (15T) . . . . .	1	
4	24111-081-000	<b>PIECE</b> , push . . . . .	1	
5	24621-081-000	<b>SPRING</b> , free pawl . . . . .	1	
6	28802-081-000	<b>SPROCKET</b> , starter drive . . . . .	1	C00001-C08851
	28802-081-020	<b>SPROCKET</b> , starter drive (29T) . . . . .	1	C08851
7	28811-081-000	<b>SHAFT</b> , pedal . . . . .	1	
8	28813-081-000	<b>CHAIN</b> , pedal shaft (36 LINKS) . . . . .	1	
9	28815-081-000	<b>PAWL</b> , ratchet . . . . .	2	C00001-C05501
	28815-081-010	<b>PAWL</b> , ratchet . . . . .	2	C05501
10	28817-081-000	<b>SPRING</b> , set, ratchet pawl . . . . .	2	C00001-C08851
	28817-081-030	<b>SPRING</b> , set, ratchet pawl . . . . .	2	C08851
11	90451-081-000	<b>WASHER A</b> , thrust, 17 mm . . . . .	2	
12	90461-081-000	<b>WASHER</b> , 15 mm . . . . .	1	
13	90469-081-000	<b>WASHER</b> , 20 mm . . . . .	4	C00001-C08851
	90469-081-010	<b>WASHER</b> , 20 mm . . . . .	4	C08851
14	91203-081-005	<b>OIL-SEAL</b> , 20 x 30 x 6 . . . . .	3	
15	94510-20000	<b>CIR-CLIP</b> , ex., 20 mm . . . . .	5	
16	94520-10000	<b>CIR-CLIP</b> , in., 10 mm . . . . .	1	
17	96100-60040	<b>BEARING</b> , ball, 6004 . . . . .	1	

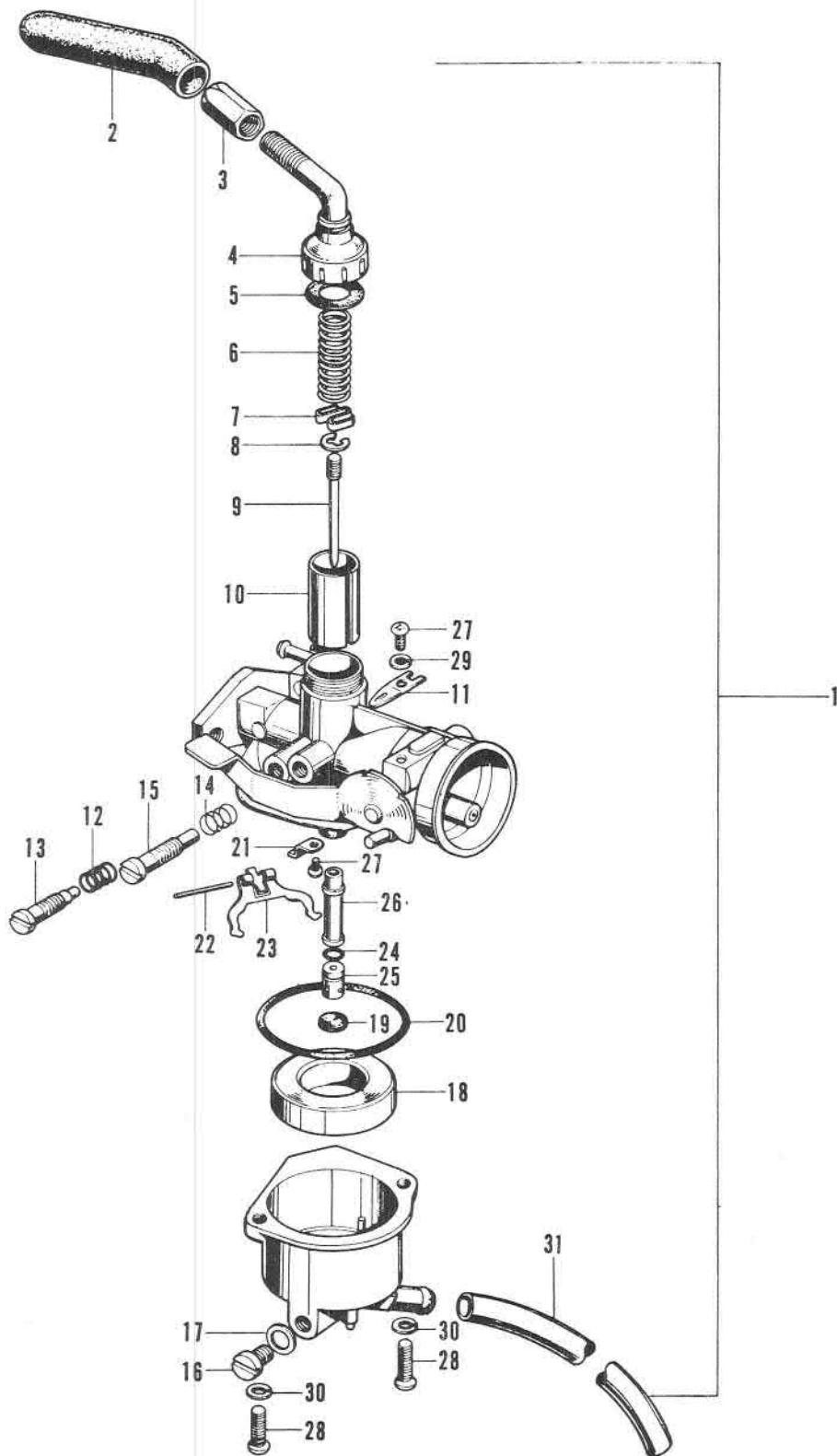


Ref. N°	Part N°	Description	Q T Y	Remarks
1	13000-081-010	<b>SHAFT COMP.</b> , crank . . . . .	1	
2	13010-044-000	<b>RING SET</b> , piston (S. T. D.) . . . . .	1	
	13020-044-000	<b>RING SET</b> , piston (0.25) . . . . .	1	
	13030-044-000	<b>RING SET</b> , piston (0.50) . . . . .	1	
	13040-044-000	<b>RING SET</b> , piston (0.75) . . . . .	1	
	13050-044-000	<b>RING SET</b> , piston (1.00) . . . . .	1	
3	13101-081-000	<b>PISTON</b> (S. T. D.) . . . . .	1	
	13102-081-000	<b>PISTON</b> (0.25) . . . . .	1	
	13103-081-000	<b>PISTON</b> (0.50) . . . . .	1	
	13104-081-000	<b>PISTON</b> (0.75) . . . . .	1	
	13105-081-000	<b>PISTON</b> (1.00) . . . . .	1	
4	13111-044-010	<b>PIN</b> , piston . . . . .	1	
5	13115-044-000	<b>CLIP</b> , piston pin . . . . .	2	
6	13201-063-300	<b>ROD</b> , connecting . . . . .	1	
7	13211-044-030	<b>RETAINER</b> , roller . . . . .	1	
8	13311-081-310	<b>SHAFT, R.</b> crank . . . . .	1	
9	13321-063-310	<b>SHAFT, L.</b> crank . . . . .	1	
10	13381-063-300	<b>PIN.</b> crank . . . . .	1	
11	14311-081-010	<b>SPROCKET</b> , timing (15T) . . . . .	1	
12	90719-081-000	<b>PIN</b> , timing . . . . .	1	
13	90741-044-000	<b>PIN</b> , knock, 3 x 4 . . . . .	1	
14	91101-205-010	<b>ROLLER</b> , rod, 2.5 x 8.5 . . . . .	20	
15	91211-044-000	<b>OIL-SEAL</b> , 15 x 25 x 6 . . . . .	1	
16	96100-62020	<b>BEARING</b> , ball, 6202 . . . . .	1	
17	96100-62030	<b>BEARING</b> , ball, 6203 . . . . .	1	

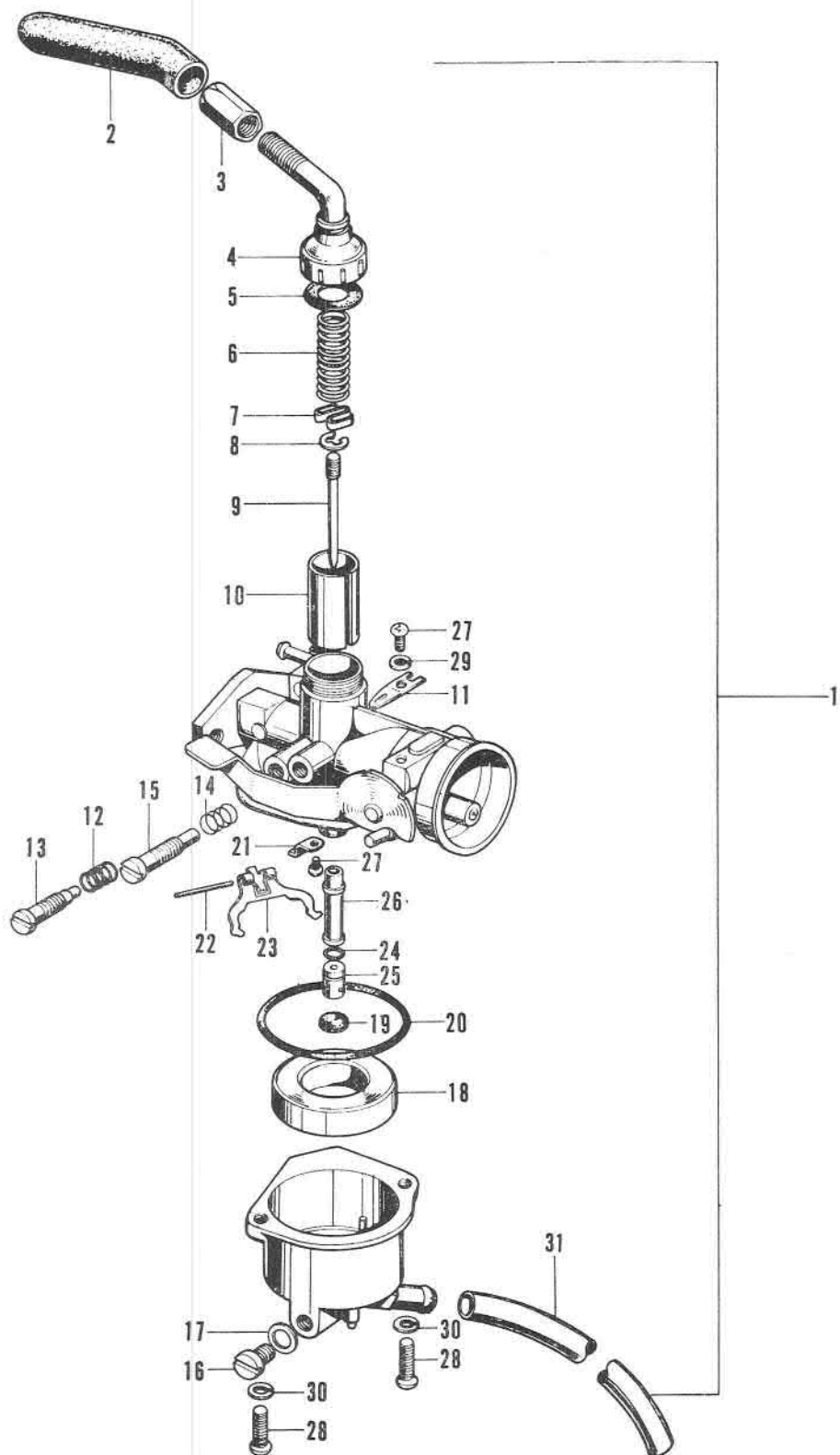




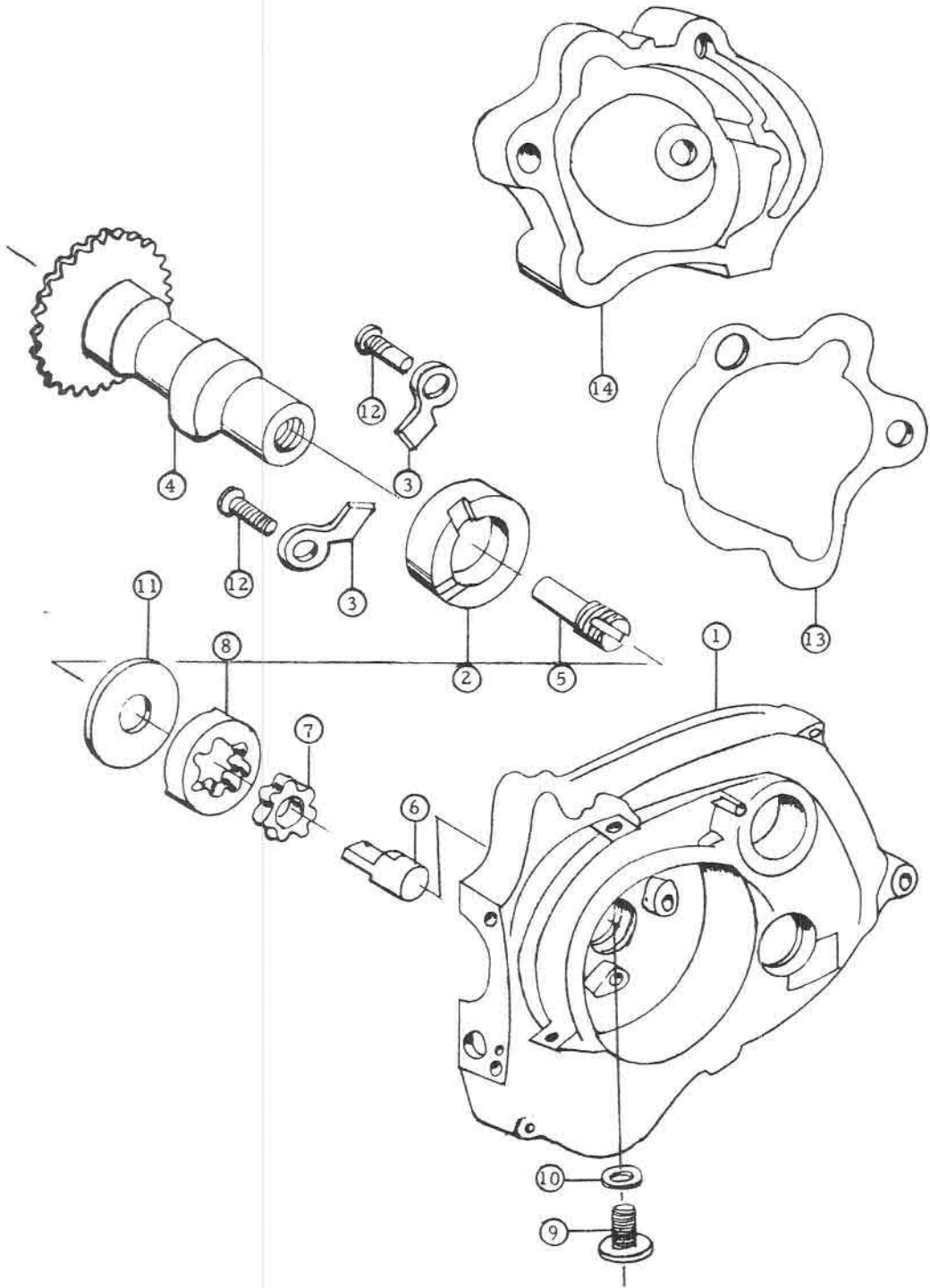
Ref. N°	Part N°	Description	QTY	Remarks
1	11100-081-010	CASE COMP., right crank . . . . .	1	
2	11191-081-000	GASKET, crank case . . . . .	1	
3	11200-081-010	CASE COMP., left crank . . . . .	1	
4	11431-063-000	COVER, dynamo . . . . .	1	
5	30202-063-004	BREAKER, contact (NIPPON DENSO).	1	
○ 6	30205-044-004	FELT COMP., oil (NIPPON DENSO) .	1	
	30205-816-004	FELT COMP., oil . . . . .	1	GB
7	30207-063-004	SCREW, breaker set (NIPPON DENSO)	1	
8	30208-063-004	WASHER, spring (NIPPON DENSO) .	1	
9	30209-063-004	WASHER, plain (NIPPON DENSO) .	1	
10	30541-063-004	COIL COMP., primery (NIPP. DENSO)	1	
○ 11	31100-081-601	A.C. GENERATOR, Ass'y, flywheel .	1	GB (15/15W) CE08351→CE59184
	31100-081-602	A.C. GENERATOR, Ass'y, flywheel .	1	(18/18W) CE59185→
	31100-099-620	A.C. GENERATOR, Ass'y, flywheel .	1	F CF10061→
	31100-099-690	A.C. GENERATOR, Ass'y, flywheel .	1	NL - B (40kmh) CH31550→
	31100-063-621	A.C. GENERATOR, Ass'y, flywheel .	1	B (>40kmh)
○ 12	31121-081-601	FLYWHEEL COMP. (NIPPON DENSO)	1	GB (15/15W) CE08351→CE59184
	31121-081-602	FLYWHEEL COMP. (NIPPON DENSO)	1	GB (18/18W) CE59185→
	31121-099-620	FLYWHEEL COMP. . . . .	1	F CF10061→
	31121-099-690	FLYWHEEL COMP. . . . .	1	NL & B (40 kmh) CH31550→
	31121-063-621	FLYWHEEL COMP. . . . .	1	B (>40kmh)
○ 13	31631-081-601	COIL COMP., lamp (NIPPON DENSO)	1	GB (15/15W) CE08351→CE59184
	31631-081-602	COIL COMP., lamp . . . . .	1	GB (18/18W) CE59185→
	31631-063-621	COIL COMP., lamp . . . . .	1	F & B
	31631-081-601	COIL COMP., lamp . . . . .	1	
14	32956-063-300	GROMMET, dynamo cord . . . . .	1	
○ 15	32957-063-010	CLAMPER, dynamo cord . . . . .	1	
	32957-063-670	CLAMPER, dynamo cord . . . . .	1	GB (18/18W) CE59185→
16	90201-044-000	NUT, 10 mm . . . . .	1	
17	90407-259-000	PACKING, drain cock . . . . .	1	
18	90426-001-000	WASHER, magneto fixing . . . . .	1	
19	92800-12000	BOLT, drain plug, 12 mm . . . . .	1	
○ 20	93500-04022-0 A	SCREW, pan, 4 x 22 . . . . .	4	
	93500-04030-0 A	SCREW, pan, 4 x 30 . . . . .	2	GB (18/18W) CE59185→
21	93500-06036	SCREW, pan, 6 x 36 . . . . .	3	
22	93500-06045	SCREW, pan, 6 x 45 . . . . .	1	
23	94301-08120	PIN, knock, 8 x 12 . . . . .	4	



Ref. N°	Part N°	Description	Q T Y	Remarks
○ 1-1	16100-099-602	<b>CARBURETTOR ASS'Y, F5 A</b> . . . . .	1	GB - F - I - B (>40kmh)
	16100-099-691	<b>CARBURETTOR ASS'Y, F4 A</b> . . . . . (Used in NL - B 40 km/h Type)	1	NL - B 40kmh
2	16194-063-004	<b>CAP, cable</b> . . . . .	1	
3	16118-063-004	<b>ADJUSTER, cable</b> . . . . .	1	
4	16119-063-004	<b>TOP</b> . . . . .	1	
5	16171-044-004	<b>WASHER, top</b> . . . . .	1	
6	16185-044-004	<b>SPRING, throttle</b> . . . . .	1	
7	16156-044-004	<b>PLATE, needle clip</b> . . . . .	1	
8	16157-044-004	<b>CLIP, needle</b> . . . . .	1	
○ 9	16151-063-004	<b>NEEDLE, jet</b> . . . . .	1	GB - F - I - B (>40kmh)
	16151-063-690	<b>NEEDLE, jet</b> (Used in NL - B) . . . . .	1	NL - B 40kmh
10	16141-063-004	<b>VALVE, throttle</b> . . . . .	1	
11	16199-063-004	<b>PLATE, clip</b> . . . . .	1	
12	16181-001-004	<b>SPRING, air screw</b> . . . . .	1	
13	16162-044-004	<b>SCREW, air</b> . . . . .	1	
14	16181-250-004	<b>SPRING, throttle stop screw</b> . . . . .	1	
15	16163-063-004	<b>SCREW, throttle stop</b> . . . . .	1	
16	16164-225-004	<b>SCREW, drain</b> . . . . .	1	
17	16189-056-004	<b>WASHER, fiber, 6.2 Ø</b> . . . . .	1	
18	16122-063-004	<b>FLOAT</b> . . . . .	1	
19	16197-063-004	<b>PACKING</b> . . . . .	1	
20	16173-063-004	<b>O-RING, 43 Ø</b> . . . . .	1	
21	16196-063-014	<b>PLATE, arm pin set</b> . . . . .	1	
22	16126-063-014	<b>PIN, arm</b> . . . . .	1	
23	16127-063-014	<b>ARM, float</b> . . . . .	1	
24	16176-551-004	<b>O-RING, 3.2 Ø</b> . . . . .	1	



Ref. N°	Part N°	Description	Q T Y	Remarks
○ 25	99114-063-0500	<b>JET</b> , main (#50) . . . . .	1	
	99114-063-0520	<b>JET</b> , main (#52) . . . . .	1	
	99114-063-0550	<b>JET</b> , main (#55) (S.T.D.) . . . . . (Used in NL & B 40kmh)	1	
	99114-063-0580	<b>JET</b> , main (#58) . . . . .	1	
	99114-063-0600	<b>JET</b> , main (#60) . . . . .	1	
	99114-063-0620	<b>JET</b> , main (#62) (S.T.D.) . . . . .	1	F - GB - I - B (>40kmh)
	99114-063-0650	<b>JET</b> , main (#65) . . . . .	1	
	99114-063-0680	<b>JET</b> , main (#68) . . . . .	1	
26	16133-081-004	<b>JET</b> , needle . . . . .	1	
	16133-081-690	<b>JET</b> , needle (Used in Netherland) . . . . .	1	
27	93500-03005-0 A	<b>SCREW</b> , pan., 3 x 5 . . . . .	2	
28	93500-04012-0 A	<b>SCREW</b> , pan., 4 x 12 . . . . .	2	
29	94111-03000	<b>WASHER</b> , spring, 3 mm . . . . .	1	
30	94111-04000	<b>WASHER</b> , spring 4 mm . . . . .	2	
31	95001-35140	<b>TUBE</b> , fuel, 3.5 x 140 . . . . .	1	
32	16123-063-004	<b>VALVE</b> , float . . . . .	1	



Ref. N°	Part N°	Description	Q T Y	Remarks
1	11200-081-020	<b>CASE, L.</b> crank . . . . .	1	
2	11215-081-000	<b>BUSH,</b> 17.5 mm . . . . .	1	
3	11218-081-000	<b>PLATE,</b> bush set, 17.5 mm . . . . .	2	
4	14101-081-020	<b>SHAFT,</b> cam . . . . .	1	
5	15381-081-000	<b>SHAFT A,</b> oil pump drive . . . . .	1	
6	15382-081-000	<b>SHAFT B,</b> oil pump drive . . . . .	1	
7	15331-035-000	<b>ROTOR,</b> oil pump inner . . . . .	1	
8	15332-035-000	<b>ROTOR,</b> oil pump outer . . . . .	1	
9	90081-044-000	<b>BOLT,</b> sealing, 8 mm . . . . .	1	
10	90488-044-000	<b>WASHER,</b> 8 mm . . . . .	1	
11	90471-081-000	<b>WASHER,</b> pump side . . . . .	1	
12	93500-06014	<b>PAN,</b> screw 6 x 14 . . . . .	2	
13	12391-081-040	<b>GASKET,</b> cylinder head cover . . . . .	1	
14	12301-081-060	<b>COVER,</b> cylinder head . . . . .	1	

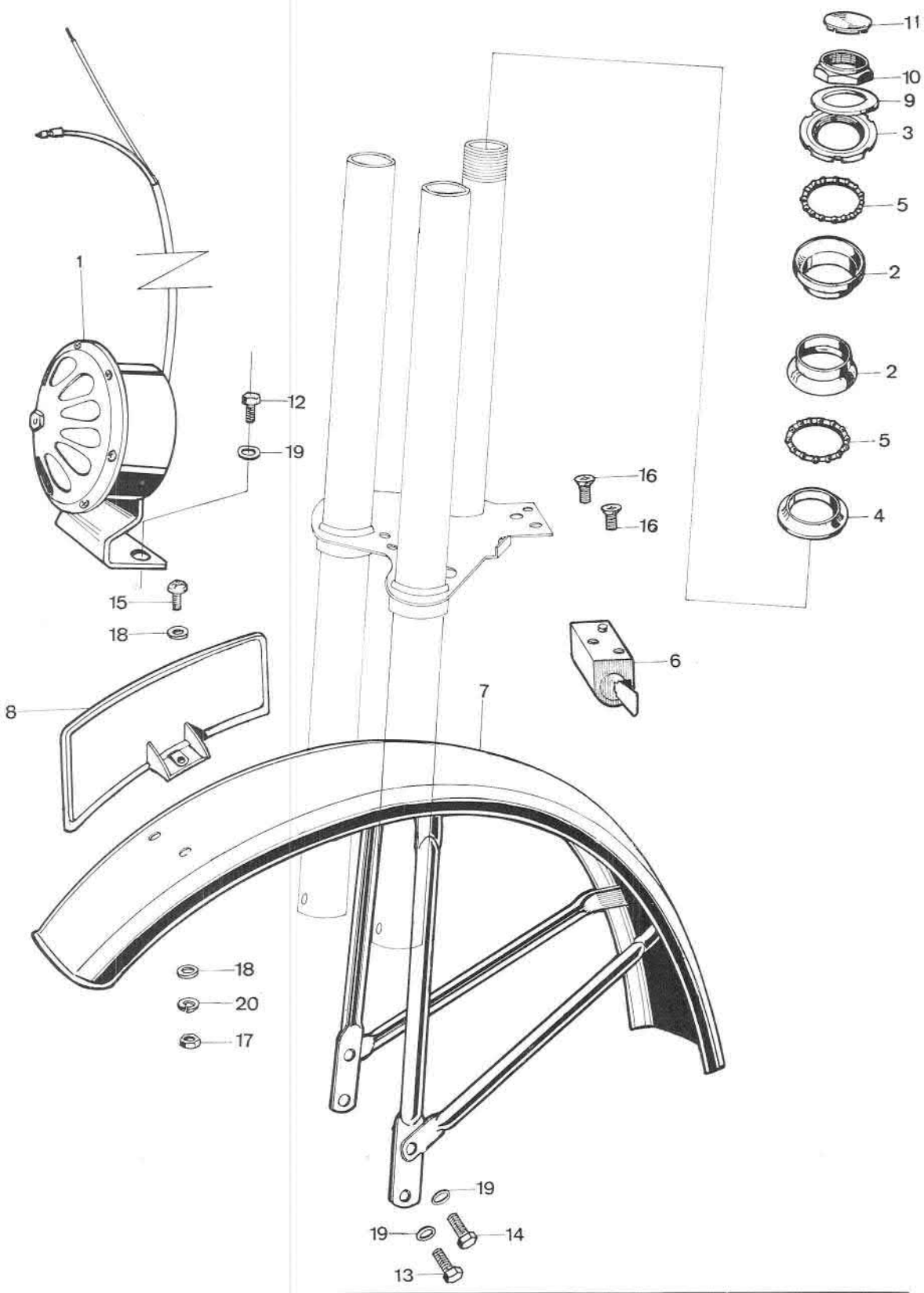




# 4-STROKE.NET

KLIK OP BOVENSTAANDE LINK VOOR EEN DONATIE

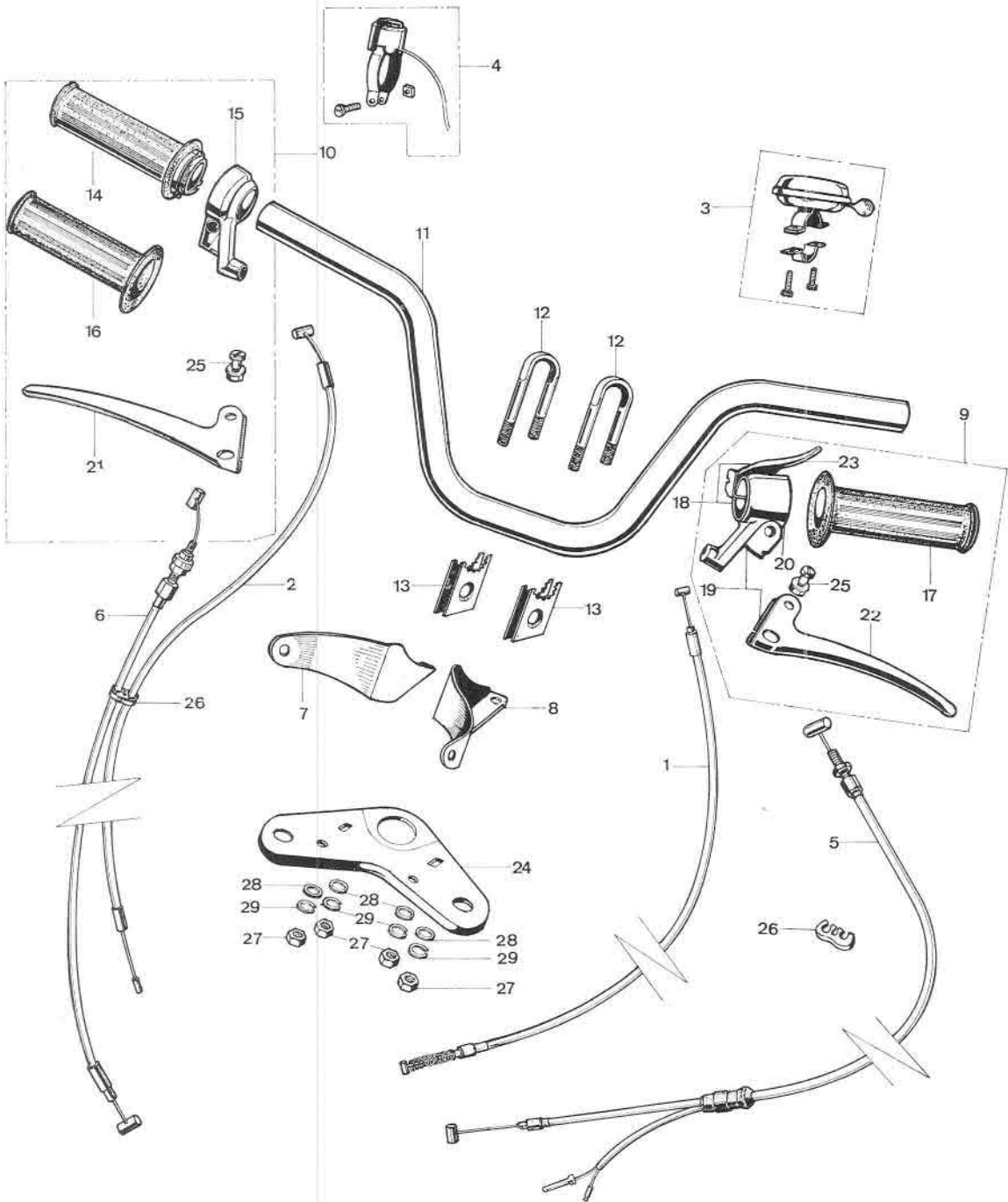




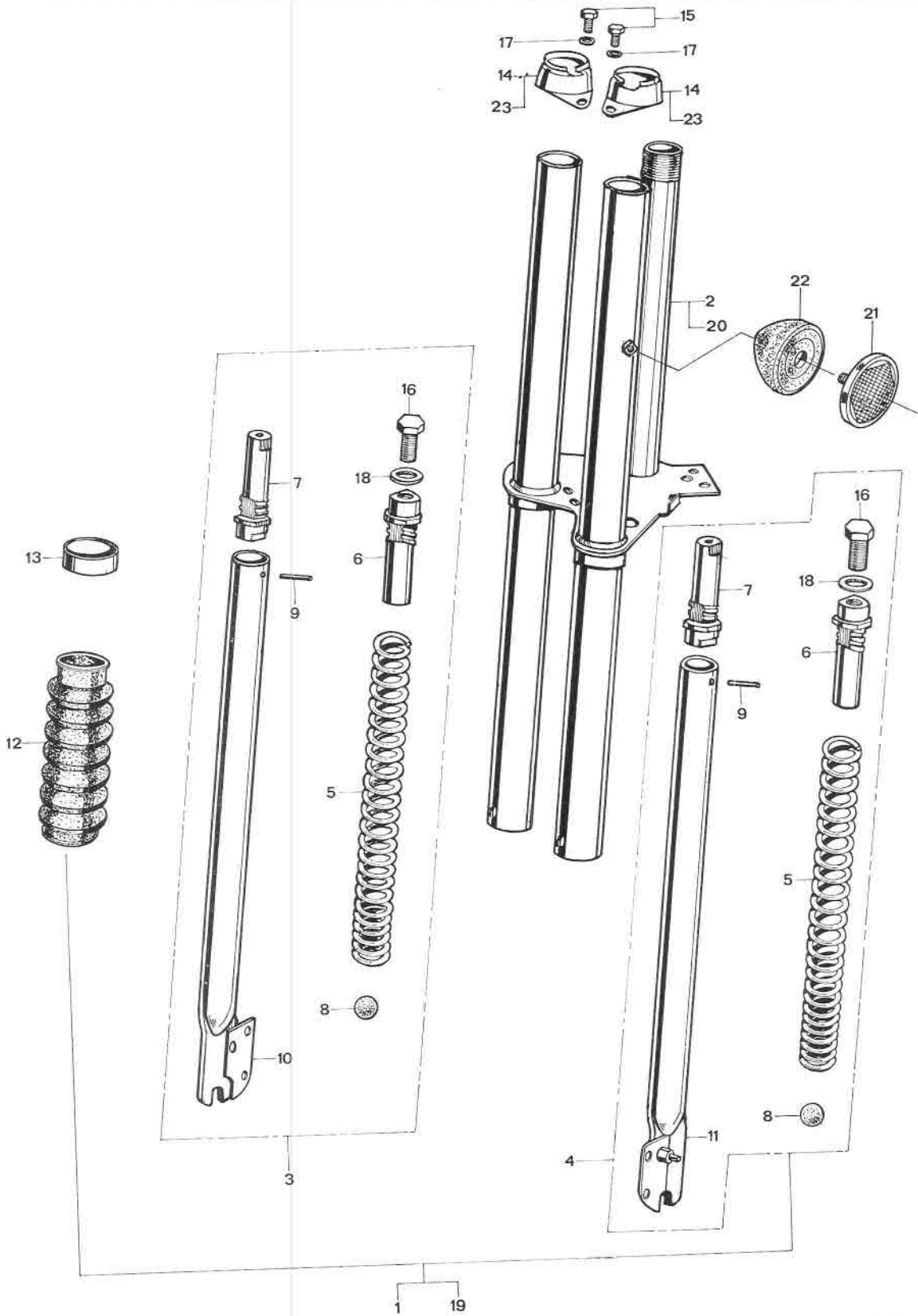
Ref. N°	Part N°	Description	QTY	Remarks
1	38100-099-600	<b>HORN</b> . . . . .	1	
2	50301-093-003	<b>RACE</b> , steering ball . . . . .	2	
3	53211-093-003	<b>RACE TOP</b> , steering cone . . . . .	1	
4	53212-093-003	<b>RACE BOTTOM</b> , steering cone . . . . .	1	
5	53213-093-003	<b>CAGE</b> , ball ass'y . . . . .	2	
6	53600-044-007	<b>LOCK</b> , steering handle . . . . .	1	
7	61100-099-000 XL	<b>FENDER</b> , front (Ivory White) . . . . . (Used in B - F - I)	1	
	61100-099-691 XL	<b>FENDER</b> , front (Ivory White) . . . . . (Used in NL)	1	
○ 8	87900-099-690	<b>PLATE</b> , ornament . . . . .	1	NL only
9	90201-093-000	<b>WASHER</b> , plain 26 mm . . . . .	1	
10	90301-093-003	<b>NUT</b> , steering head stem . . . . .	1	
11	90302-093-000	<b>CAP</b> , steering nut . . . . .	1	
12	92000-06008	<b>BOLT</b> , hex., 6 x 8 . . . . .	2	
13	92000-06012	<b>BOLT</b> , hex., 6 x 12 . . . . .	2	
14	92000-06015	<b>BOLT</b> , hex., 6 x 15 . . . . .	2	
○ 15	93500-04012	<b>SCREW</b> , pan, 4 x 12 . . . . .	2	NL only
16	93600-06012	<b>SCREW</b> , flat, 6 x 12 . . . . .	2	
○ 17	94001-04000	<b>NUT</b> , hex., 4 mm . . . . .	2	NL only
○ 18	94101-04000	<b>WASHER</b> , plain, 4 mm . . . . .	4	NL only
19	94101-06000	<b>WASHER</b> , plain, 6 mm . . . . .	6	
○ 20	94111-04000	<b>WASHER</b> , spring, 4 mm . . . . .	2	NL only

Steering set = n° 2 → 5 + n° 9 → 11.

FRAME GROUP



Ref. N°	Part N°	Description	Q T Y	Remarks
1	14950-099-000	<b>CABLE COMP.</b> , decomp. . . . .	1	
2	17910-099-000	<b>CABLE COMP.</b> , throttle . . . . .	1	
3	38110-027-610	<b>BELL</b> . . . . .	1	
4	38700-050-620	<b>BUTTON</b> , horn . . . . .	1	
○ 5-1	43450-099-000	<b>CABLE COMP.</b> , rear brake (+stopswitch) (Used in B and NL)	1	PF50 FN° →A62696
	43450-099-930	<b>CABLE COMP.</b> , rear brake (+stopswitch) (Used in B and NL)	1	PF50 FN° A62697→
	43450-099-680	<b>CABLE COMP.</b> , rear brake . . . . . (Used in F)	1	PF50 FN° →A67716
	43450-099-681	<b>CABLE COMP.</b> , rear brake . . . . . (Used in F)	1	PF50 PF50-A67717→
6	45450-093-000	<b>CABLE COMP.</b> , front brake . . . . .	1	
7	51516-093-000	<b>STAY</b> , headlight, right . . . . . (Used for Aprilia headlight)	1	
8	51517-093-000	<b>STAY</b> , headlight, left . . . . . (Used for Aprilia headlight)	1	
○ 9-1	53001-093-003 B	<b>HANDLE GRIP</b> , brake comp. (Black).	1	ASS'Y PF50 FN°→A62696
	53001-093-013 B	<b>HANDLE GRIP</b> , brake comp. (Black).	1	ASS'Y PF50 A62697→
10	53002-093-003 B	<b>HANDLE GRIP</b> , throttle comp. (Black)	1	ASS'Y
11	53100-099-000	<b>PIPE COMP.</b> , steering handle . . . . .	1	
12	53111-093-000	<b>HOLDER</b> , handle pipe . . . . .	2	
13	53112-093-000	<b>BASE</b> , handle pipe . . . . .	2	
14	53141-093-003 B	<b>PIPE</b> , throttle grip (Black) . . . . .	1	
15	53152-093-003	<b>HOLDER</b> , throttle handle grip comp.	1	
16	53165-093-003 B	<b>RUBBER</b> , right grip (Black) . . . . .	1	
17	53166-093-003 B	<b>RUBBER</b> , left grip (Black) . . . . .	1	
18	53171-093-013	<b>HOLDER ASS'Y</b> , lever grip and decomp.	1	PF50 - FN° A62697→
19	53172-093-013	<b>HOLDER COMP.</b> , handle grip, left . . . . .	1	PF50 - FN° A62697→
20	53173-093-003	<b>HOLDER LEVER</b> , handle grip,, left . . . . .	1	PF50 - FN° →A62696
	53173-093-013	<b>HOLDER LEVER</b> , handle grip, left . . . . .	1	PF50 - FN° A62697→
21	53175-093-003	<b>LEVER</b> , right handle grip . . . . .	1	
22	53178-093-003	<b>LEVER</b> , left handle grip . . . . .	1	
23	53181-093-003	<b>LEVER</b> , decomp. . . . .	1	
24	53230-093-000	<b>BRIDGE</b> , fork top . . . . .	1	
25	90114-093-003	<b>SCREW</b> , handle grip lever pivot . . . . .	1	
○ 26-1	90504-099-000	<b>CLIP</b> , cable . . . . .	2	
27	94001-06000	<b>NUT</b> , hex., 6 mm . . . . .	4	
28	94101-06000	<b>WASHER</b> , plain, 6 mm . . . . .	4	
29	94111-06000	<b>WASHER</b> , spring, 6 mm . . . . .	4	

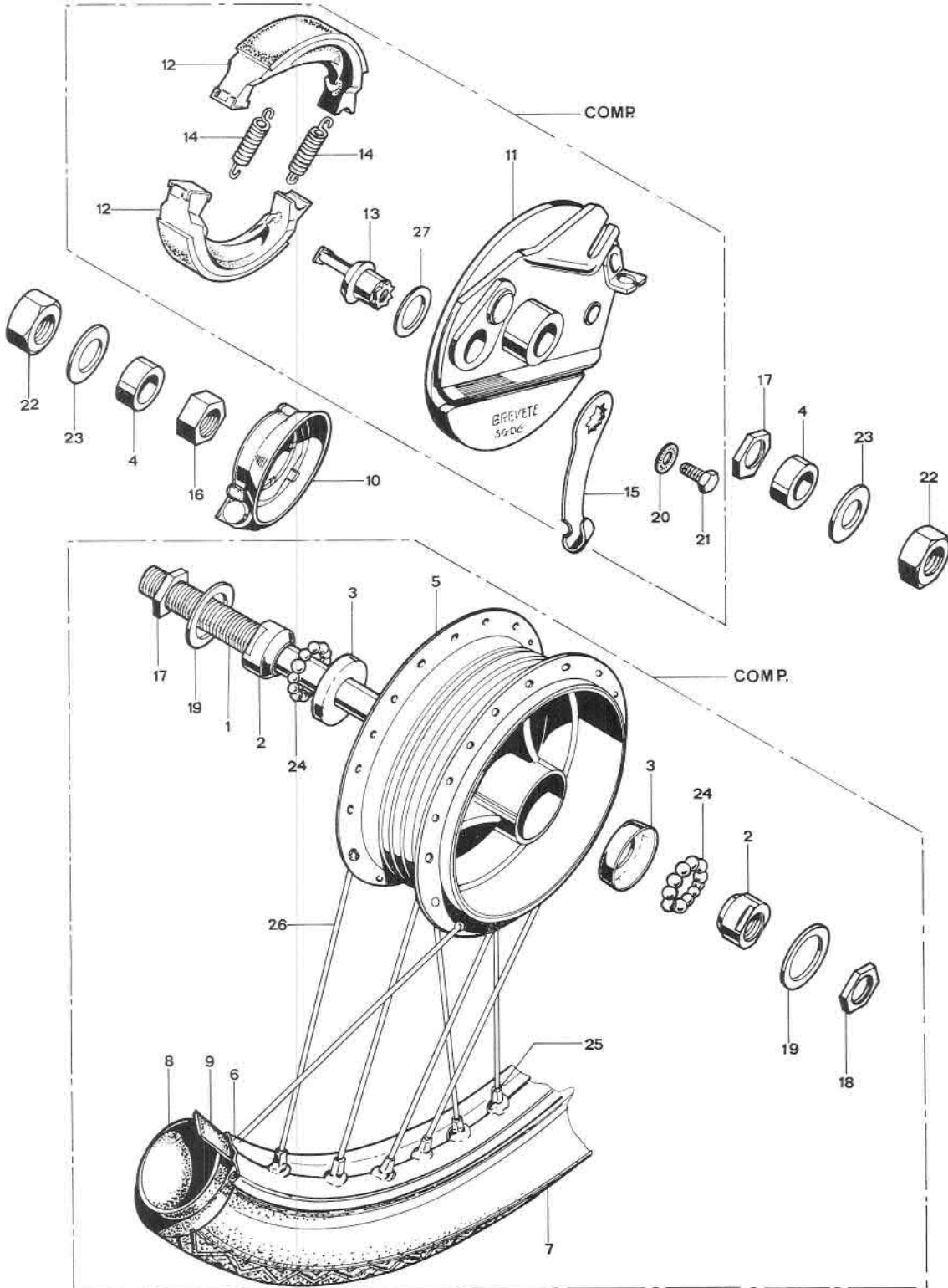


Ref. N°	Part N°	Description	QTY	Remarks
1-1	51500-099-000	<b>FORK, FRONT ASS'Y</b> . . . . .	1	PF50F No A00001→A19387
△	51500-099-010	<b>FORK, FRONT ASS'Y</b> . . . . .	1	PF50F No A19388→
2-1	51510-099-000	<b>FORK</b> , fork comp. . . . .	1	PF50F No A00001→A19387
	51510-099-010	<b>FORK</b> , fork comp. . . . .	1	PF50F No A19388→
3	51520-099-000	<b>PIPE</b> , slide comp. right, front fork . . .	1	PF50F No A00001→A19387
	51520-099-010	<b>PIPE</b> , slide comp. right, front fork . . .	1	PF50F No A19388→
4	51530-099-000	<b>PIPE</b> , slide comp. left, front fork . . .	1	PF50F No A00001→A19387
	51530-099-010	<b>PIPE</b> , slide comp. left, front fork . . .	1	PF50F No A19388→
5*		<b>SPRING</b> , front cushion . . . . .	2	
6*		<b>HOLDER</b> , cushion spring . . . . .	2	
7*		<b>HOLDER</b> , cushion spring . . . . .	2	
8*		<b>RUBBER</b> , front cushion stopper . . . . .	2	
9*		<b>PIN</b> , spring, 4 x 25 . . . . .	2	
10*		<b>PIPE</b> , slide right, front fork half . . . .	1	
11*		<b>PIPE</b> , slide left, front fork half . . . .	1	
12	51505-093-000 B	<b>BOOT</b> , front fork (Black) . . . . .	2	
13	51518-093-000	<b>BAND</b> , chrome, front fork . . . . .	2	
14	51602-093-000	<b>COVER</b> , front fork . . . . .	2	
15	92000-06008	<b>BOLT</b> , hex., 6 x 8 mm . . . . .	2	
16*		<b>BOLT</b> , hex., 10 x 30 mm (pitch 1.25) . .	2	
17	94101-06000	<b>WASHER</b> , plain 6 mm . . . . .	2	
18*		<b>WASHER</b> , plain 10 mm . . . . .	2	
○ 19	51500-099-303	<b>FORK FRONT ASS'Y</b> . . . . .	1	B only PF50-FNoA61647→
○ 20	51510-099-303	<b>FORK</b> , front, comp. . . . .	1	B only
○ 21	33741-099-303	<b>REFLEX</b> , reflector front . . . . .	2	B only
○ 22	33744-099-303	<b>BASE</b> , reflector front . . . . .	2	B only
○ 23	51602-093-303	<b>COVER</b> , front fork . . . . .	2	B only

\* Not available separately.

△ FORK FRONT ASS'Y 51500-099-010 = n°1 — 18 + BRIDGE, Fork top n° 53230-093-000  
(Page 29 N° 24)

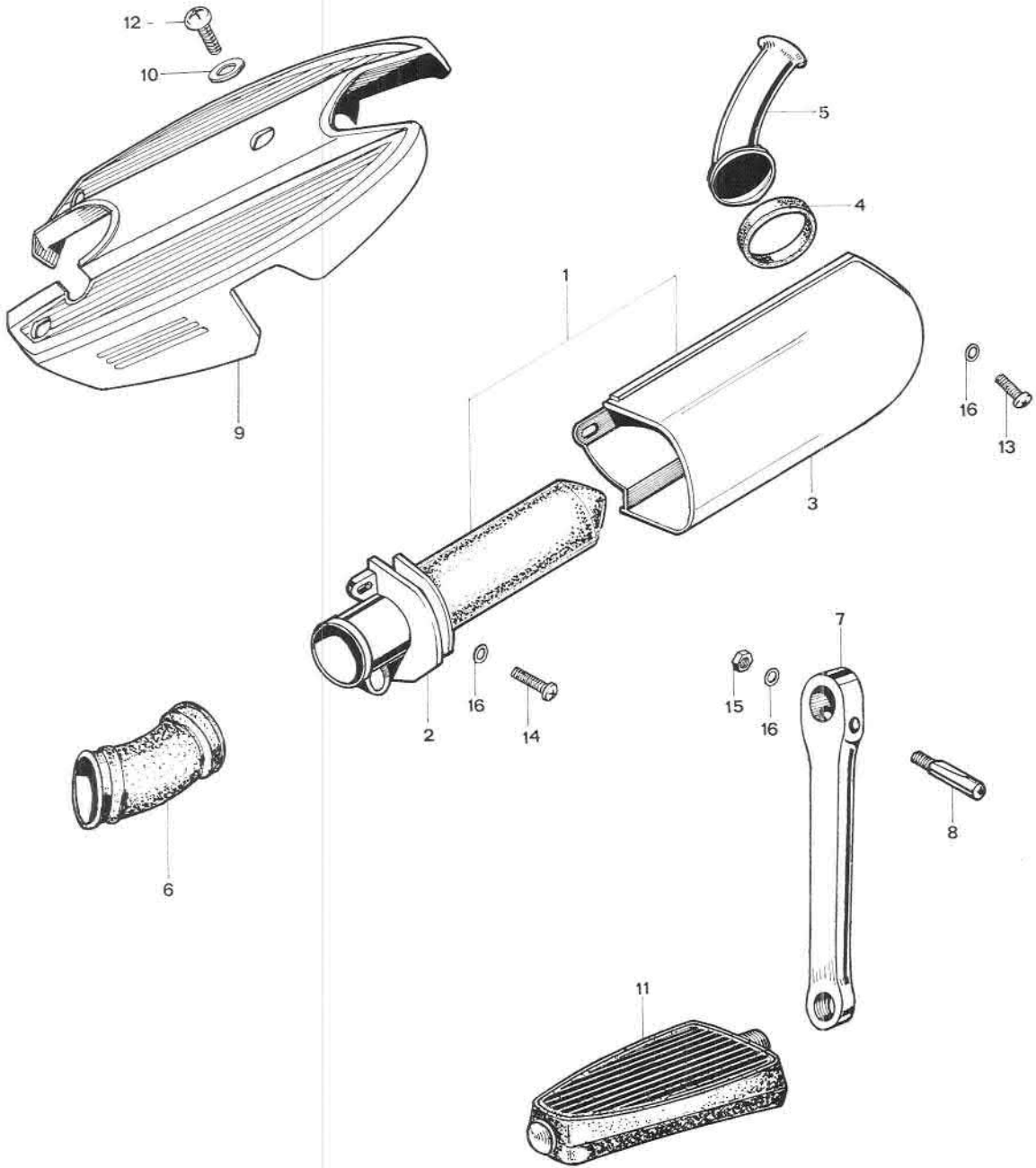




Ref. N°	Part N°	Description	Q T Y	Remarks
	44600-099-000	<b>WHEEL</b> , comp. front . . . . .	1	(No panel)
	44610-093-000	<b>HUB</b> , front wheel comp. . . . .	1	
1	44301-093-003	<b>AXLE</b> , front wheel . . . . .	1	
2	44302-093-003	<b>CONE RACE</b> , front wheel . . . . .	2	
3	44303-093-003	<b>BALL CASE</b> , front wheel . . . . .	2	
4	44311-093-003	<b>COLLAR</b> , R & L, front axle . . . . .	2	
5	44601-093-003	<b>HUB</b> , front wheel . . . . .	1	
6	44701-099-000	<b>RIM</b> , wheel 17" . . . . .	1	
○ 7	44711-099-158	<b>TIRE</b> , front wheel (Michelin) . . . . .	1	
○ 8	44712-099-158	<b>TUBE</b> , front wheel (Michelin) . . . . .	1	
○ 9	44713-099-158	<b>FLAP</b> , tire (Michelin) . . . . .	1	
○ 10-1	44800-099-000	<b>GEAR BOX</b> , speedometer (Koot) . . . . .	1	PF50 - FNo →A90293
	44800-099-003	<b>GEAR BOX</b> , speedometer (Veglia) . . . . .	1	PF50 - FNo A 90294→
	44807-093-000	<b>WASHER A</b> , plain, 11 mm x 2 (Koot) . . . . .	1	PF50 - FNo →A90293
	45100-093-003	<b>PANEL</b> , front brake comp. . . . .	1	
11	45110-093-003	<b>PLATE</b> , front brake panel, comp. . . . .	1	
12	45120-093-003	<b>SHOE</b> , brake comp. . . . .	2	
13	45131-093-003	<b>CAM</b> , front brake . . . . .	1	
14	45133-093-003	<b>SPRING</b> , brake shoe . . . . .	2	
15	45410-093-003	<b>ARM</b> , front brake . . . . .	1	
○ 16-1	90312-093-003	<b>NUT</b> , hex., 11 mm . . . . . (th 9 mm Koot speedometer)	1	→PF50 FNo A 90293
	90312-099-003	<b>NUT</b> , hex., 11 mm . . . . . (th 7 mm Veglia speedometer)	1	PF50 - FNo A 90294→
17	90313-099-003	<b>NUT</b> , hex., thin B, 11 mm . . . . .	2	
18	90314-093-003	<b>NUT</b> , hex., thin A, 11 mm . . . . .	1	
19	90505-093-003	<b>WASHER</b> , plain 29.2 mm . . . . .	2	
○ 20	90520-099-003	<b>WASHER</b> , arm brake setting . . . . .	1	
○ 21	92000-06008	<b>BOLT</b> , hex., 6 x 8 . . . . .	1	
22	94001-11000	<b>NUT</b> , hex., 11 mm . . . . .	2	
23	94101-11000	<b>WASHER</b> , plain 11 mm (DIN 126). . . . .	2	
24	96211-07000	<b>BALL</b> , steel 5,55 ∅ . . . . .	22	
25*		<b>NIPPLE</b> , front # 13 . . . . .	36	
26	97463-11214	<b>SPOKE</b> , front . . . . .	36	
27	90521-099-003	<b>THRUST WASHER</b> , brake panel . . . . .	1	

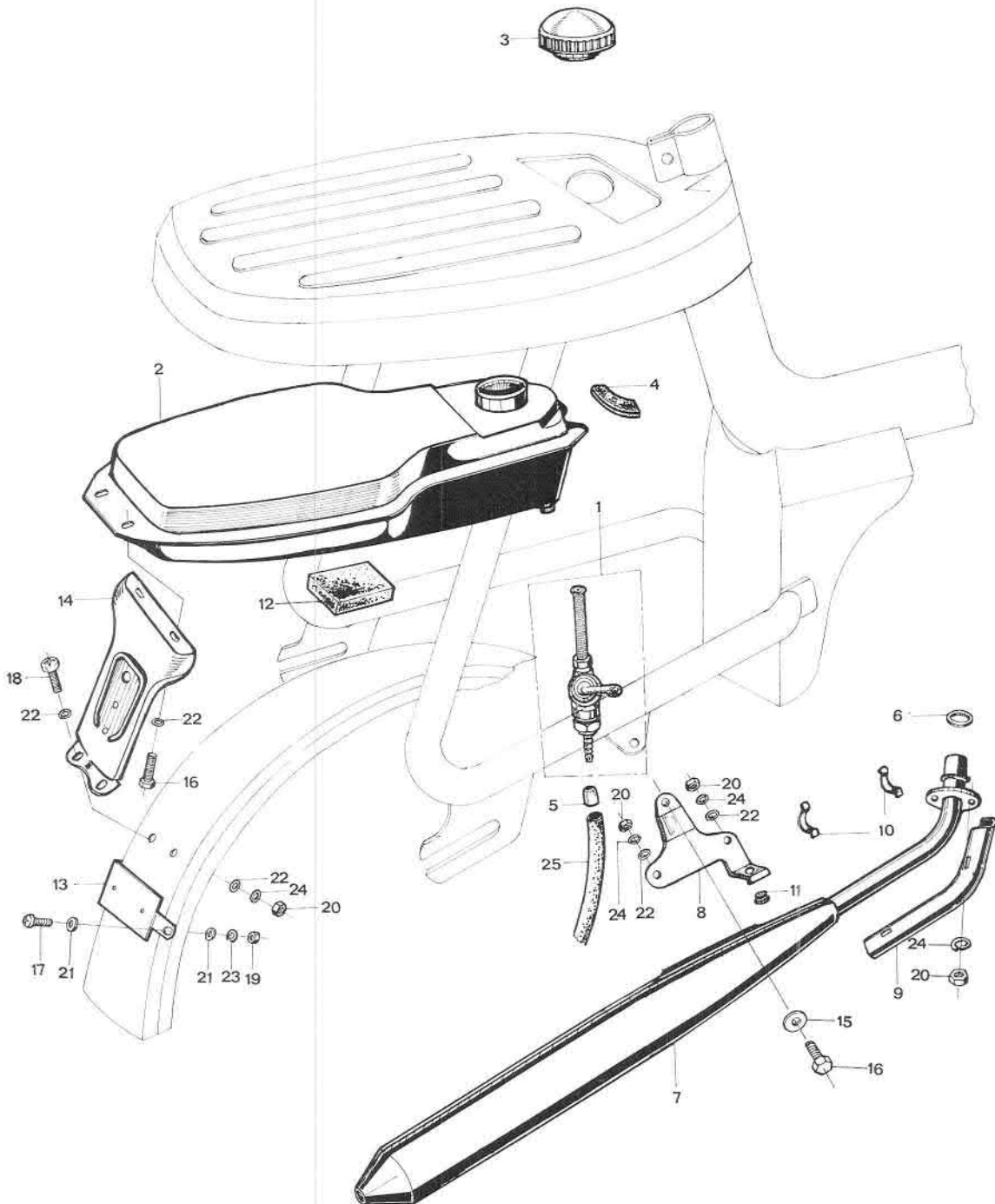
WHEEL, comp., front, 44600-099-000 =  — N° 7, 8 & 9.

HUB, front wheel comp., 44610-093-000 = N° 1, 2, 3, 5, 17, 18, 19, 24.



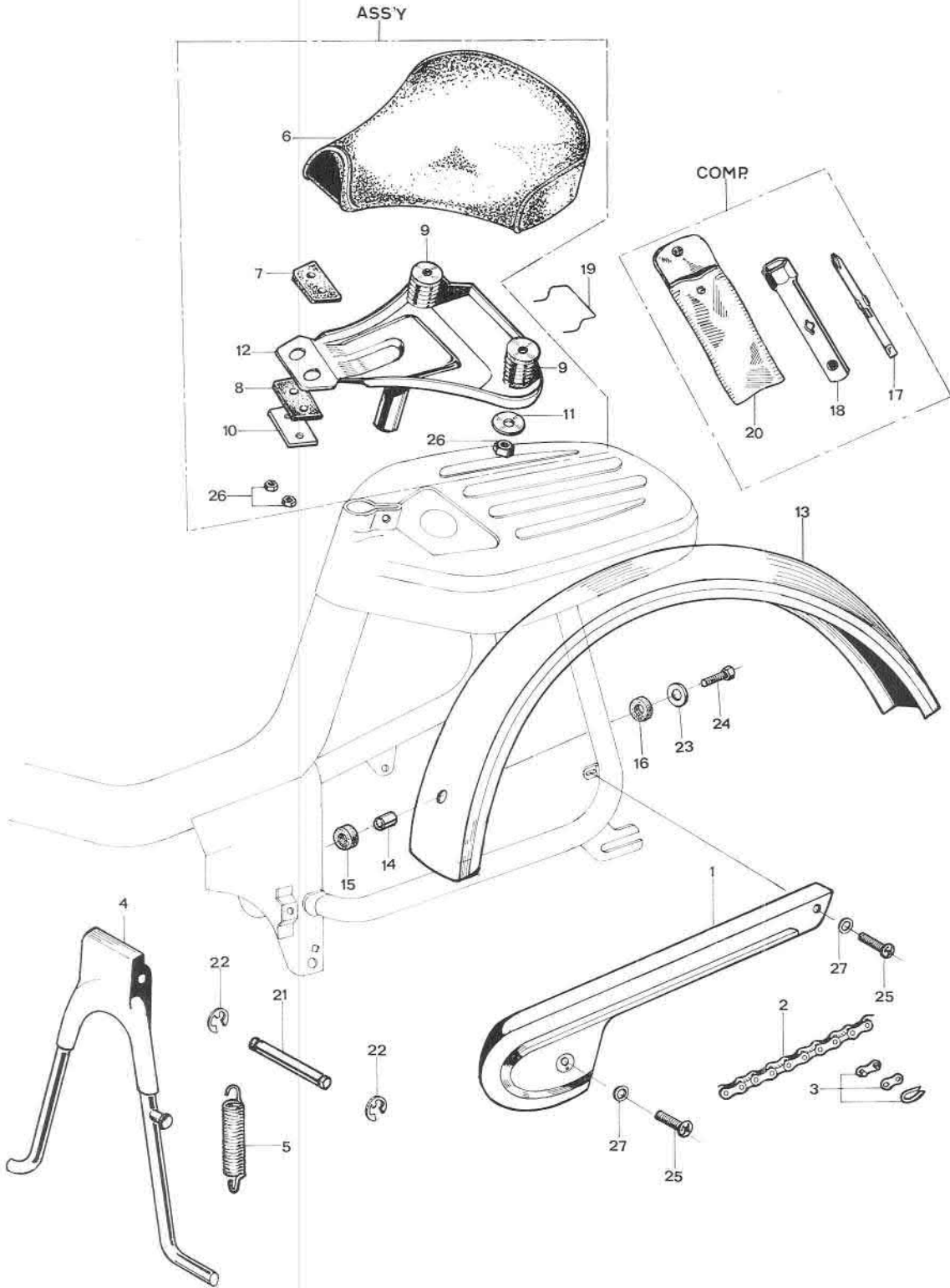
**P F 5 0 S † F - 5 AIR CLEANER - CRANK ARM - ENGINE COVER H O N D A**

Ref. N°	Part N°	Description	QTY	Remarks
○ 1-1	17200-081-000	<b>CLEANER ASS'Y</b> , air . . . . .	1	
2	17205-063-020	<b>ELEMENT</b> , air cleaner . . . . .	1	
3	17225-063-020	<b>CASE</b> , air cleaner . . . . .	1	
4	17227-063-010	<b>PACKING</b> , inlet tube . . . . .	1	
5	17251-081-000	<b>TUBE</b> , air cleaner inlet . . . . . (Used in GB - F - I - B > 40kmh)	1	
	17251-044-010	<b>TUBE</b> , air cleaner inlet . . . . . (Used in NL and B 40 kmh)	1	
○ 6-1	17253-081-000	<b>TUBE</b> , connecting, air cleaner . . . . .	1	
7	40220-093-000	<b>ARM</b> , crank, right . . . . .	1	
	40230-093-000	<b>ARM</b> , crank, left . . . . .	1	
8	40235-093-000	<b>PIN</b> , crank arm, setting . . . . .	2	
○ 9-1	83600-117-000 XL	<b>COVER</b> , engine (Yvory white) . . . . . (Used in B - NL - F - I)	1	
	83600-117-000 GD	<b>COVER</b> , engine (Donkey Grey) . . . . . (Used in GB)	1	
○ 10	90502-099-000	<b>WASHER</b> , plain, 6,5 mm x 18 x 15 . . . . .	3	
○ 11-1	90609-031-000	<b>PEDAL</b> , comp. crank R/H (Monobloc) (Used in F and GB)	1	
	40215-099-630	<b>PEDAL</b> , comp. crank R/H (With reflect.) (Used in B - NL - I)	1	
	90709-031-000	<b>PEDAL</b> , comp. crank L/H (Monobloc) (Used in F and GB)	1	
	40225-099-630	<b>PEDAL</b> , comp. crank L/H (With reflect.) (Used in B - NL - I)	1	
○ 12	93500-06012	<b>SCREW</b> , pan, 6 x 12 . . . . .	3	
13	93500-06015	<b>SCREW</b> , pan, 6 x 15 . . . . .	1	
14	93500-06018	<b>SCREW</b> , pan, 6 x 18 . . . . .	1	
15	94001-06000	<b>NUT</b> , hex., 6 mm . . . . .	2	
16	94101-06000	<b>WASHER</b> , plain 6 mm . . . . .	4	



P F 5 0 S t F - 6 FUEL TANK - MUFFLER Exhaust - TAILLIGHT STAY H O N D A

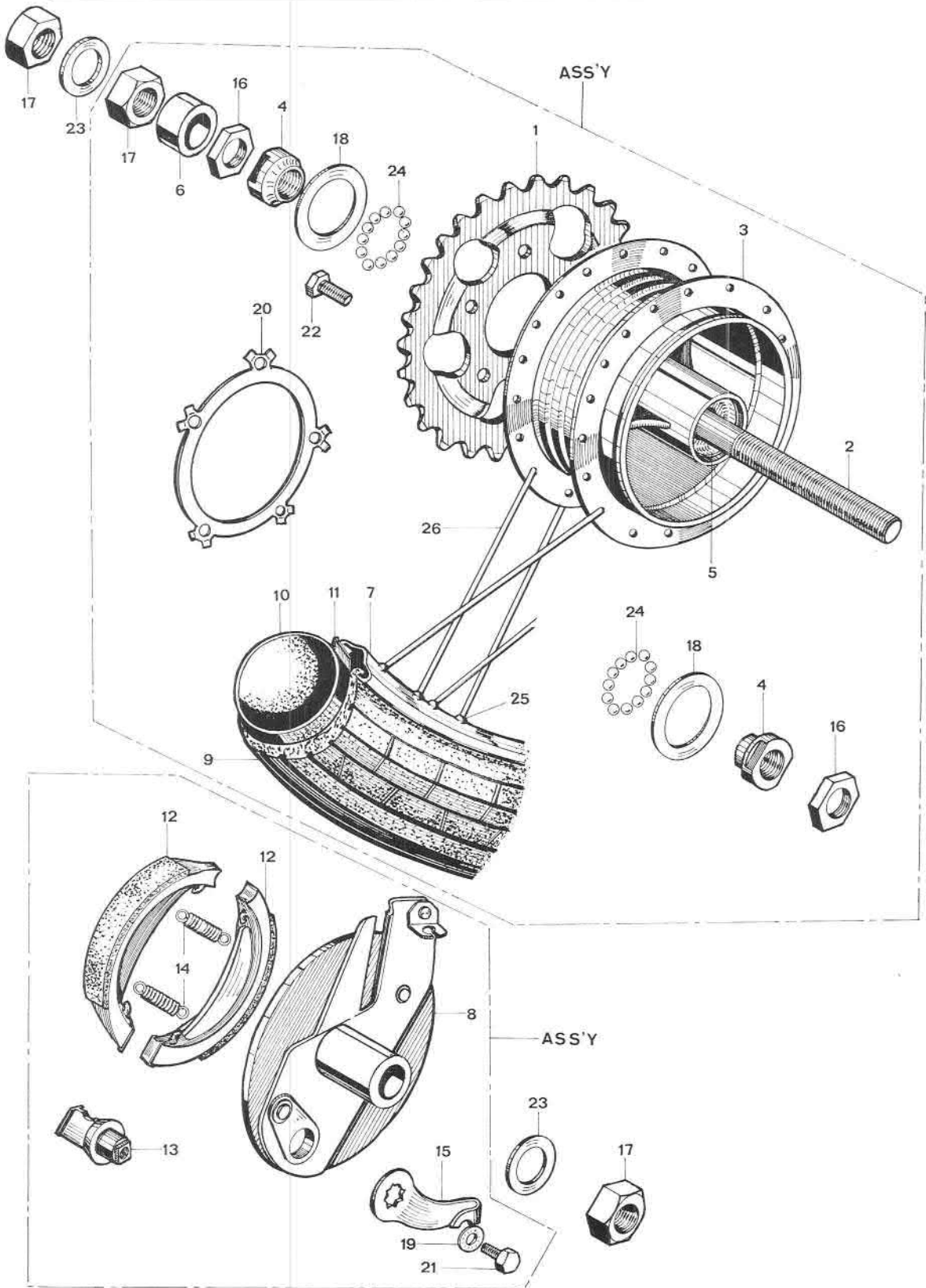
Ref. N°	Part N°	Description	QTY	Remarks
○ 1	16950-099-159	<b>COCK</b> , fuel ass'y (With reserve) . . . (Used in F)	1	
	16950-099-930	<b>COCK</b> , fuel ass'y (With res. + 2 filters) (Used in B - NL - GB - I)	1	
2	17500-099-010	<b>FUEL TANK</b> . . . . .	1	
3	17620-093-000	<b>CAP</b> , fuel filler . . . . .	1	
4	17651-099-000	<b>RUBBER</b> , tank setting . . . . .	1	
○ 5	17722-099-000	<b>CAP</b> , fuel feed tube . . . . .	2	
6	18291-044-020	<b>GASKET</b> , exhaust pipe . . . . .	1	
○ 7	18300-081-020	<b>MUFFLER</b> , comh. exhaust . . . . .	1	
○ 8	18351-099-020 B	<b>HANGER</b> , muffler (Black) . . . . .	1	
9	18400-081-020	<b>COVER</b> , exhaust pipe . . . . .	1	
10	18401-063-000	<b>CLIP</b> , exhaust cover . . . . .	2	
11	50524-023-000	<b>RUBBER</b> , mainstand stopper . . . . .	1	
12	80121-099-000	<b>CUSHION</b> , fender rear . . . . .	1	
○ 13	84208-099-690 XL	<b>HOLDER</b> , insurance plate (Ivory wh.) (Used in NL)	1	
14	84701-099-010 XL	<b>PLATE</b> , taillight (Ivory white) . . . . .	1	
15	90502-099-000	<b>WASHER</b> , plain, 6,5 x 18 x 1,5) . . . . .	1	
16	92000-06015	<b>BOLT</b> , hex., 6 x 15 mm . . . . .	3	
17	93500-04012	<b>SCREW</b> , pan, 4 x 12 . . . . .	2	
18	93500-06012	<b>SCREW</b> , pan, 6 x 12 . . . . .	2	
19	94001-04000	<b>NUT</b> , hex., 4 mm . . . . .	2	
20	94001-06000	<b>NUT</b> , hex., 6 mm . . . . .	6	
21	94101-04000	<b>WASHER</b> , plain, 4 mm . . . . .	4	
22	94101-06000	<b>WASHER</b> , plain, 6 mm . . . . .	8	
23	94111-04000	<b>WASHER</b> , spring, 4 mm . . . . .	2	
24	94111-06000	<b>WASHER</b> , spring, 6 mm . . . . .	6	
25	95001-45475	<b>TUBE</b> , fuel 4.5 x 475 . . . . .	1	



**PF50S† F-7 CHAIN CASE - MAINSTAND - SEAT - REAR FENDER H O N D A**

Ref. N°	Part N°	Description	QTY	Remarks
1	40510-099-000	<b>CASE</b> , drive chain . . . . .	1	see colour chart
2	40530-099-690	<b>CHAIN</b> , drive (84 Links) (Used in NL and B (40kmh)) . . . . .	1	for B 40kmh - FN° A36359→
	40530-099-620	<b>CHAIN</b> , drive (86 Links) Used in F-GB-DK-SF-B >40kmh) . . . . .	1	for B >40kmh - FN° →A36358
3	40531-099-003	<b>JOINT</b> , drive chain . . . . .	1	
4	50500-099-010	<b>STAND MAIN</b> . . . . .	1	see colour chart
5	50522-099-000	<b>SPRING</b> , mainstand . . . . .	1	
	77100-099-000	<b>SADDLE, ASS'Y</b> . . . . .	1	
○ 6-1	77111-044-010	<b>SEAT</b> . . . . .	1	
7	77123-044-300	<b>RUBBER A</b> , saddle hinge . . . . .	1	
8	77125-044-300	<b>RUBBER B</b> , saddle hinge . . . . .	1	
9	77127-044-020	<b>SPRING</b> , seat cushion . . . . .	2	
10	77131-044-000	<b>WASHER</b> , saddle, hinge rubber . . . . .	1	
11	77133-044-020	<b>PLATE</b> , spring setting . . . . .	2	
12	77135-044-000	<b>FRAME</b> , saddle . . . . .	1	
13	80100-099-010 XL	<b>FENDER</b> , rear (Ivory White) (Used in B - F - I) . . . . .	1	PF50 - FN° A16509→
	80100-099-690 XL	<b>FENDER</b> , rear (Ivory White) (Used in NL) . . . . .	1	
	80100-099-600	<b>FENDER</b> , rear . . . . . (Used in GB)	1	see colour chart
○ 14-1	80111-099-000	<b>COLLAR</b> , distance rear fender . . . . .	1	PF50 - FN° →A16509
	90202-093-000	<b>COLLAR</b> , distance rear fender . . . . .	1	PF50 - FN° A16509→
15	80112-099-000	<b>RUBBER A</b> , rear fender . . . . .	1	PF50 - FN° A16509→
16	80113-099-000	<b>RUBBER B</b> , rear fender . . . . .	1	PF50 - FN° A16509→
	89100-093-000	<b>TOOL BAG COMP.</b> . . . . .	1	
17	83513-044-000	<b>DRIVER</b> . . . . .	1	
18	83517-063-000	<b>WRENCH</b> , spark plug . . . . .	1	
19	83541-099-000	<b>SPRING</b> , toolbag fixing . . . . .	1	
20	89101-063-000	<b>BAG</b> , tool . . . . .	1	
○ 21-1	90111-099-000	<b>SHAFT</b> , mainstand . . . . .	1	
○ 22-1	90300-099-000	<b>CIRCLIP</b> , RS8 . . . . .	2	
23	90502-099-000	<b>WASHER</b> , plain 6,5 x 18 x 1,5 . . . . .	1	PF50 - FN° A16509→
24	92000-06018	<b>BOLT</b> , hex., 6 x 18 . . . . .	1	
25	93500-06012	<b>SCREW</b> , pan., 6 x 12 . . . . .	2	
26	94001-06000	<b>NUT</b> , hex., 6 mm . . . . .	4	
27	94101-06000	<b>WASHER</b> , plain, 6 mm . . . . .	2	

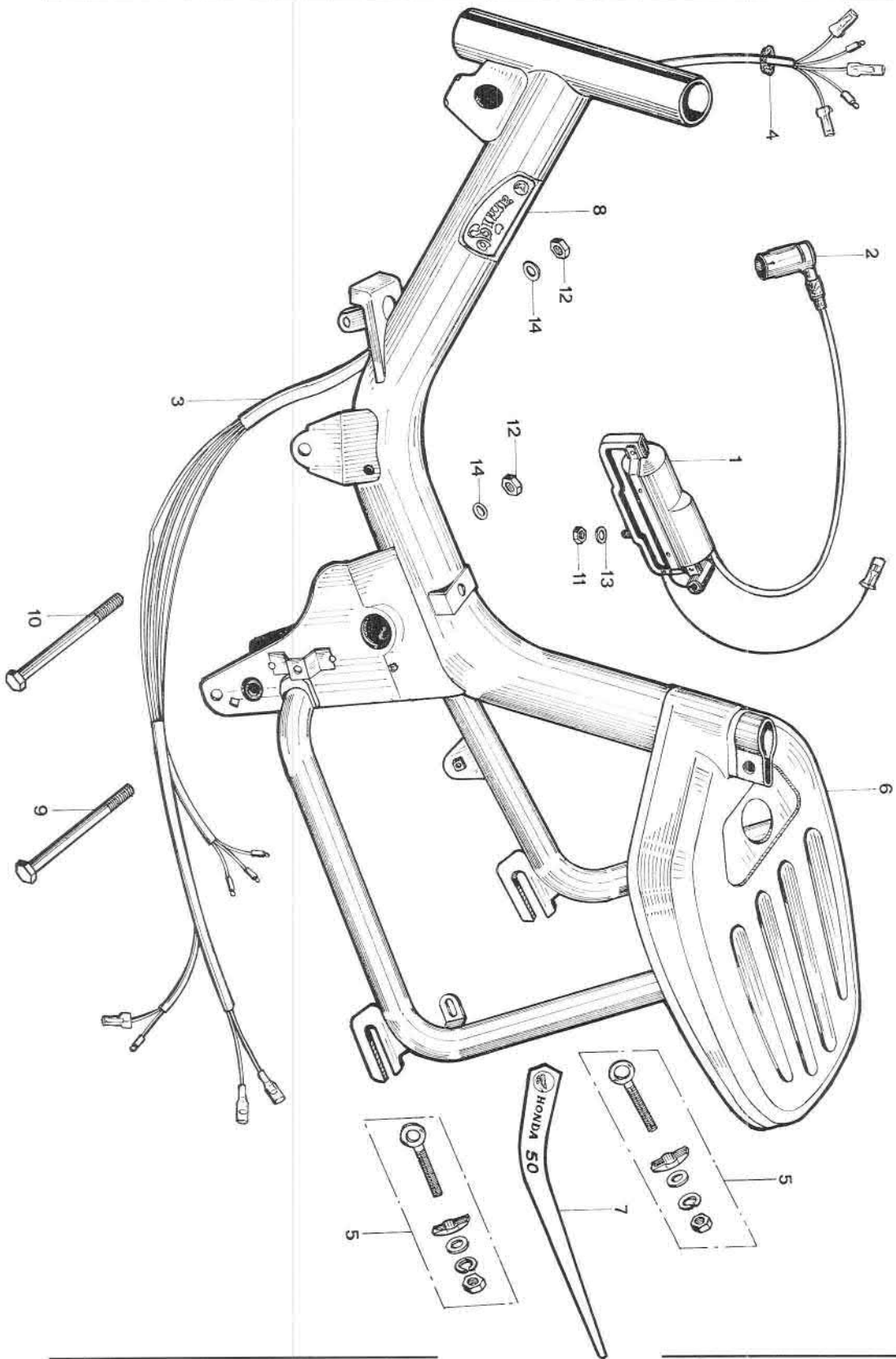




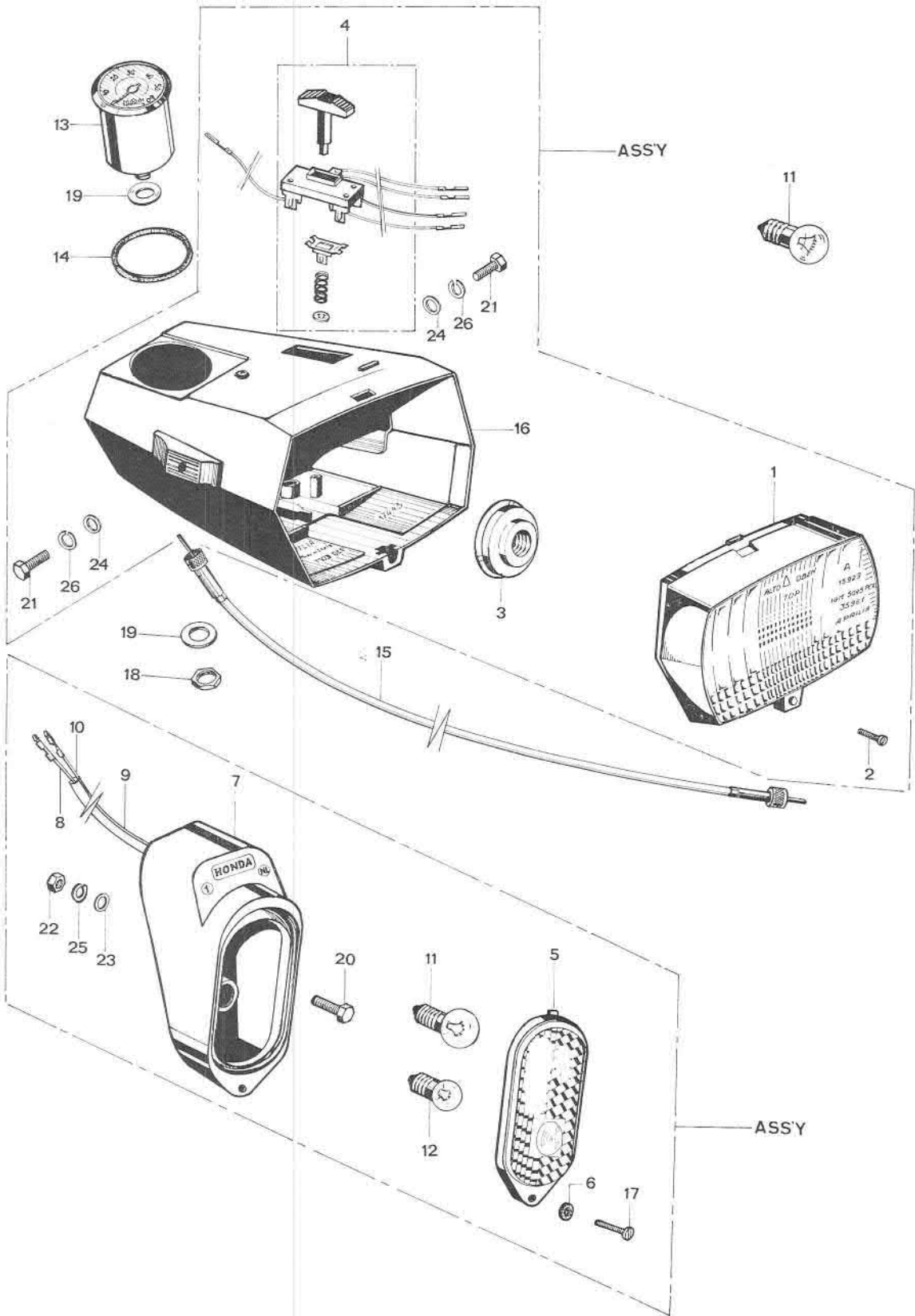
Ref. N°	Part N°	Description	QTY	Remarks
1	41201-099-010	<b>SPROCKET</b> , final driven (26T) . . . . . (Used in GB-I-P-B(<40kmh))	1	for B<40kmh →FRN° A36358
	41201-099-690	<b>SPROCKET</b> , final driven (25T) . . . . . (Used in NL - B(40kmh))	1	for B 40kmh FN° A36359→
	41201-099-620	<b>SPROCKET</b> , final driven (28T) . . . . . (Used in F - SF - DK)	1	
2	42301-099-003	<b>AXLE</b> , rear wheel . . . . .	1	
	42600-099-000	<b>WHEEL COMP.</b> , rear . . . . .	1	ASS'Y
	42610-099-003	<b>HUB COMP.</b> rear wheel . . . . .	1	ASS'Y
3	42601-099-003	<b>HUB</b> , rear wheel . . . . .	1	
4	42602-099-003	<b>CONE RACE</b> , rear wheel . . . . .	2	
5	42603-099-003	<b>BALL RACE</b> , rear wheel . . . . .	2	
○ 6	42620-099-130	<b>COLLAR</b> , distance rear axle . . . . .	1	
7	42701-099-000	<b>RIM</b> , wheel 17" . . . . .	1	
	43050-099-003	<b>PANEL COMP.</b> , rear brake . . . . .	1	ASS'Y
8	43100-093-003	<b>PLATE</b> , rear brake panel comp. . . . .	1	
○ 9	44711-099-158	<b>TIRE</b> , wheel 21" x 2" (Michelin) . . . . .	1	
○ 10	44712-099-158	<b>TUBE</b> , wheel (Michelin) . . . . .	1	
○ 11	44713-099-158	<b>FLAP</b> , tire (Michelin) . . . . .	1	
12	45120-093-003	<b>SHOE</b> , comp. brake . . . . .	2	
13	45131-093-003	<b>CAM</b> , brake . . . . .	1	
14	45133-093-003	<b>SPRING</b> , brake shoe . . . . .	2	
15	45410-093-003	<b>ARM</b> , brake . . . . .	1	
16	90313-099-003	<b>NUT</b> , hex., thin 12 mm (p. 100) . . . . .	2	
17	90315-099-003	<b>NUT</b> , hex., rear axle . . . . .	3	
18	90505-099-003	<b>WASHER</b> , plain 29.1 x 0.2 th . . . . .	2	
19	90520-099-003	<b>WASHER</b> , arm brake setting . . . . .	1	
○ 20	90522-099-000	<b>WASHER</b> , tongued . . . . .	1	
○ 21	92000-06008	<b>BOLT</b> , hex., 6 x 8 . . . . .	1	
22	92000-06018	<b>BOLT</b> , hex., 6 x 18 . . . . .	5	
23	94101-12000	<b>WASHER</b> , plain, 12 mm . . . . .	2	
24	96211-06000	<b>BALL</b> , steel 4,75 Ø . . . . .	26	
25*	97000-21000	<b>NIPPLE</b> , rear # 12 . . . . .	36	
26	97524-21220	<b>SPOKE</b> , rear . . . . .	36	

HUB, COMP., rear wheel 42610-099-003 = N° 2 + 3 + 4 + 5 + 16 + 18 + 24

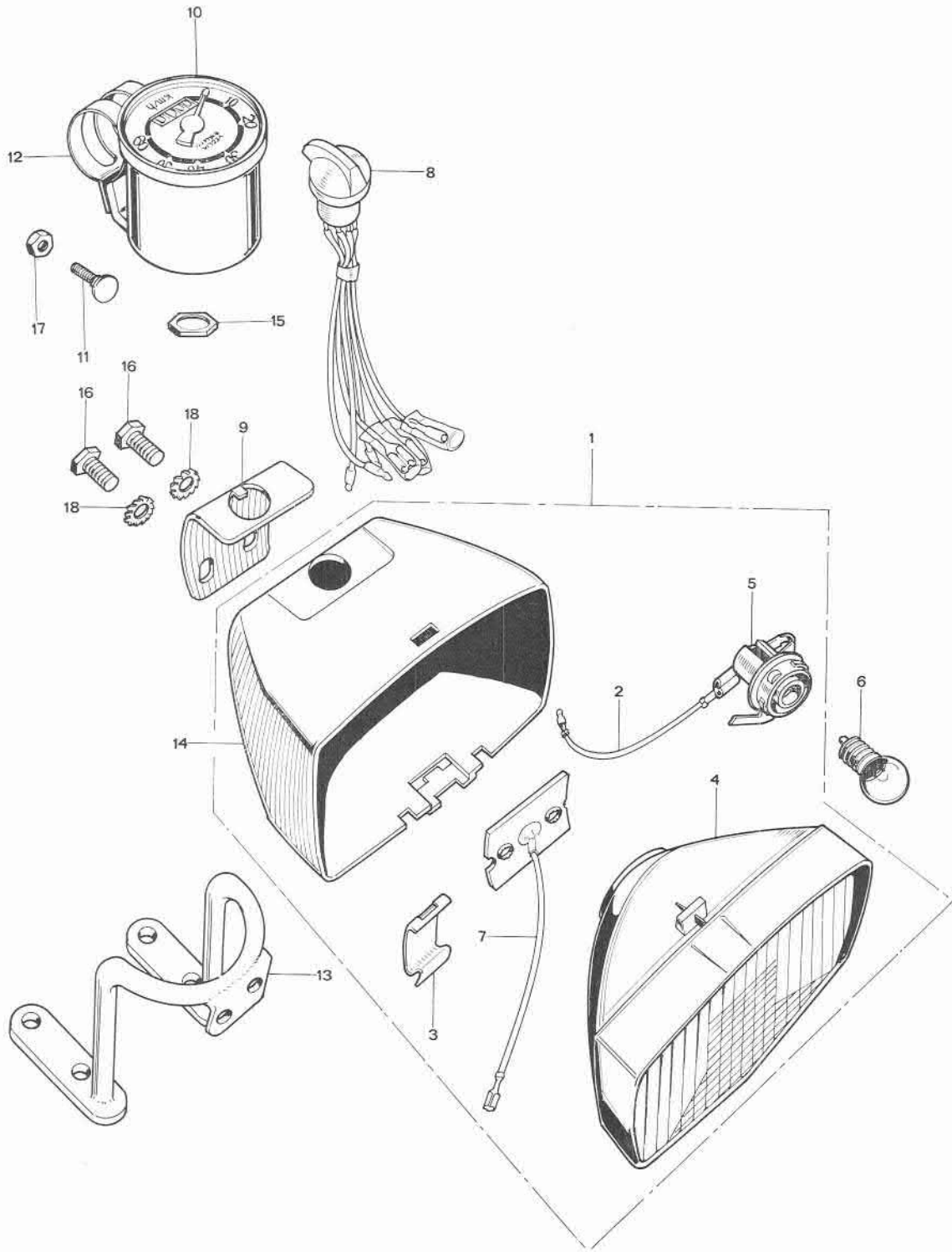
\* Not available separately.



Ref. N°	Part N°	Description	Q T Y	Remarks
1	30500-099-004	<b>COIL</b> , ignition . . . . .	1	
2	30700-063-681	<b>CAP</b> , noise suppressor . . . . .	1	
○ 3-1	32100-099-000	<b>HARNES</b> S, wire . . . . . (Used in B and NL)	1	
	32100-099-620	<b>HARNES</b> S, wire . . . . . (Used in F)	1	
4	32983-063-000	<b>GROMMET</b> , wire cord . . . . .	2	
5	40543-099-000	<b>ADJUSTER</b> , drive chain . . . . .	2	
6	50100-099-000	<b>BODY</b> , comp. frame . . . . .	1	See colour chart
7	87121-099-000	<b>EMBLEM</b> , right rear carrier . . . . .	1	
	87122-099-000	<b>EMBLEM</b> , left rear carrier . . . . .	1	
8	87123-099-000	<b>EMBLEM</b> , frame (AMIGO) . . . . .	1	
9	92020-08080	<b>BOLT</b> , hex., 8 x 80 . . . . .	1	
10	92020-08090	<b>BOLT</b> , hex., 8 x 90 . . . . .	1	
11	94001-06000	<b>NUT</b> , hex., 6 mm . . . . .	1	
12	94001-08000	<b>NUT</b> , hex., 8 mm . . . . .	2	
13	94101-06000	<b>WASHER</b> , plain, 6 mm . . . . .	1	
14	94101-08000	<b>WASHER</b> , plain, 8 mm . . . . .	2	

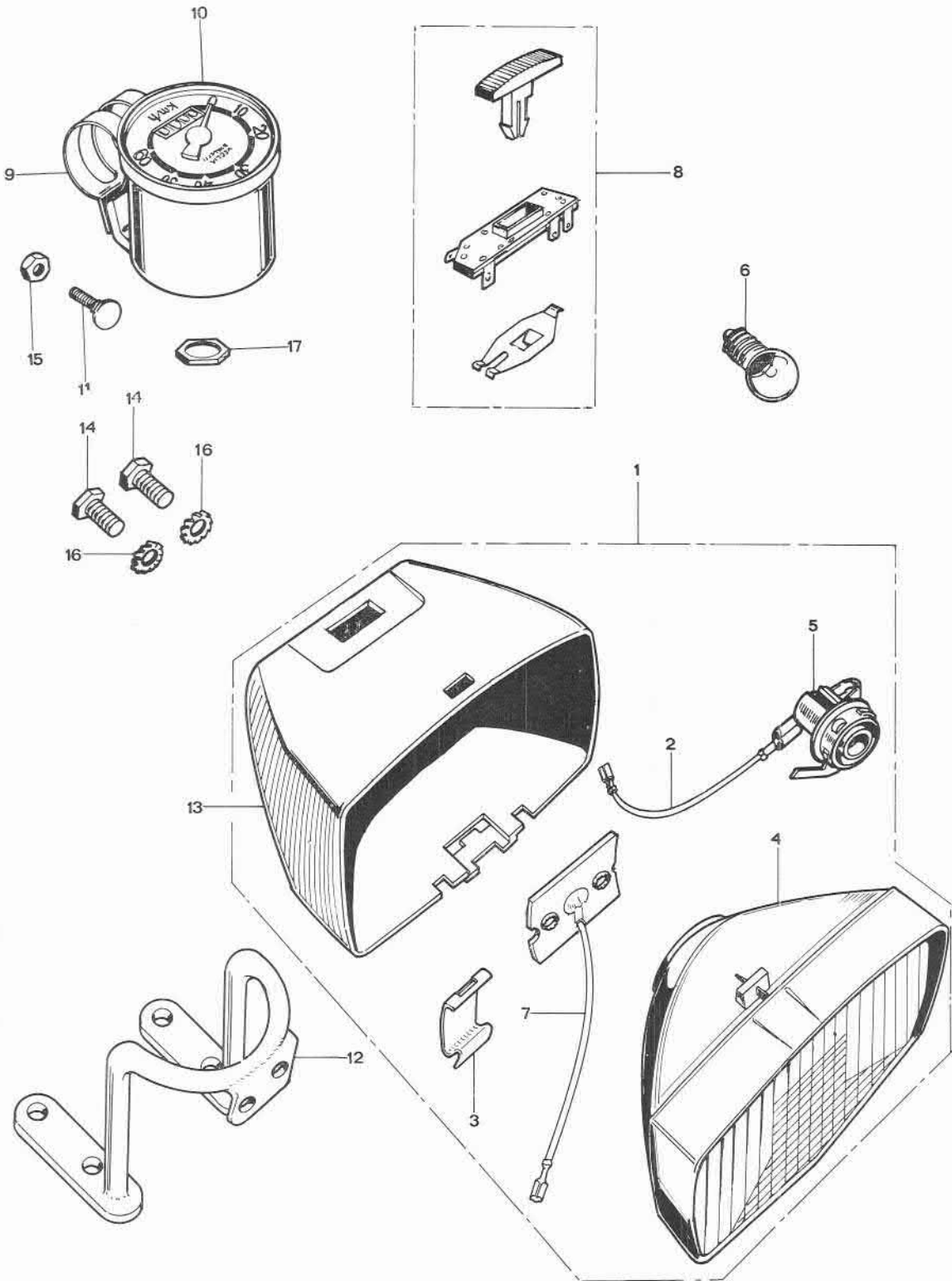


Ref. N°	Part N°	Description	Q T Y	Remarks
	33100-099-159 XL	<b>LIGHT ASS'Y</b> , head (Aprilia) (Yv. Wh.) (Used in B and NL)	1	
1	33121-099-159	<b>LENS</b> , headlight . . . . .	1	
2	33122-099-159	<b>SCREW</b> , lens headlight 3 x 12 mm . . . . .	1	
3	33130-099-159	<b>SOCKET</b> , headlight . . . . .	1	
4*		<b>SWITCH ASS'Y</b> , lighting . . . . .	1	
	33700-099-000	<b>LIGHT ASS'Y</b> , tail . . . . . (Used in B)	1	
	33700-099-690	<b>LIGHT ASS'Y</b> , tail . . . . . (Used in NL)	1	
	33700-099-620	<b>LIGHT ASS'Y</b> , tail . . . . . (Used in F)	1	
5	33701-064-621	<b>LENS</b> , taillight . . . . . (Used in B and F)	1	
	33701-064-690	<b>LENS</b> , taillight . . . . . (Used in NL)	1	
6	33702-064-620	<b>PACKING</b> , taillight lens . . . . .	1	
7	33705-064-690	<b>BODY</b> , taillight . . . . .	1	
8	33708-099-000	<b>CORD</b> , taillight . . . . .	1	
9	33709-094-000	<b>TUBE</b> , taillight cord . . . . .	1	
10	33712-099-000	<b>CORD</b> , stoplight (B & NL) . . . . .	1	
11	34901-063-690	<b>BULB</b> , headlight (6V-6W) . . . . . (Used in B & NL)	2	(Head and stoplight)
12	34906-093-000	<b>BULB</b> , taillight (10V-0,32 A) . . . . .	1	
○ 13-1	37200-099-003	<b>SPEEDOMETER</b> (kmh) (Veglia) . . . . . (Used in B - NL - I)		
○ 14-1	37202-099-003	<b>JOINT</b> , speedometer (Veglia) . . . . .	1	PF50 - FN° A90294→
	37202-099-000	<b>JOINT</b> , speedometer (Koot) . . . . .	1	PF50 - FN° →A90293
○ 15-1	44830-099-003	<b>CABLE</b> , speedometer (Veglia) . . . . .		
16	61301-099-159 XL	<b>CASE</b> , headlight (Ivory White) . . . . .	1	
17	90131-093-000	<b>SCREW</b> , tapping 3 x 13 mm . . . . .	1	
18	90310-099-003	<b>NUT</b> , thin, speedometer setting . . . . .	1	
19	90548-099-003	<b>WASHER</b> , plain 10 mm . . . . .	2	
20	92000-05012	<b>BOLT</b> , hex., 5 x 12 . . . . .	1	
21	92000-06020	<b>BOLT</b> , hex., 6 x 20 . . . . .	2	
22	94001-05000	<b>NUT</b> , hex., 5 mm . . . . .	1	
23	94101-05000	<b>WASHER</b> , plain 5 mm . . . . .	1	
24	94101-06000	<b>WASHER</b> , plain 6 mm . . . . .	2	
25	94111-05000	<b>WASHER</b> , spring 5 mm . . . . .	1	
26	94111-06000	<b>WASHER</b> , spring 6 mm . . . . .	2	

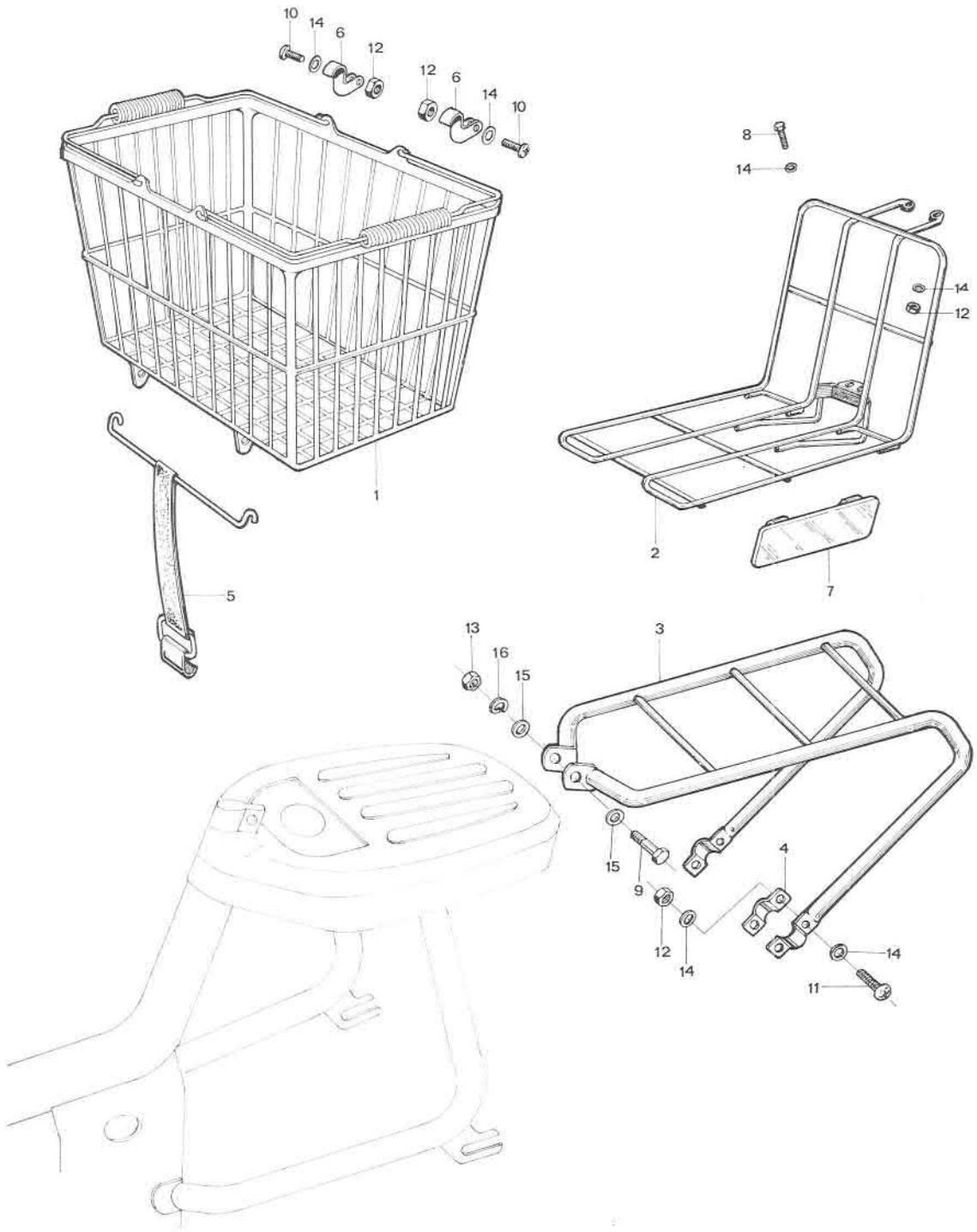


Ref. N°	Part N°	Description	Q T Y	Remarks
1	33100-099-930	<b>LIGHT ASS'Y</b> , head (Soubitez) . . . . .	1	
2	33105-094-620	<b>CORD</b> , swith headlight . . . . .	1	
3	33108-099-620	<b>CLAMP</b> , lens setting . . . . .	1	
4	33121-099-621	<b>LENS</b> , headlight . . . . .	1	
5	33130-099-620	<b>SOCKET</b> , headlight . . . . .	1	
6	34901-050-621	<b>BULB</b> , headlight (6V 6w) (Used in F) . . . . .	1	
	34901-063-690	<b>BULB</b> , headlight (6V 6w) (Used in B - NL) . . . . .	1	
7	34902-099-620	<b>EARTH</b> , headlight . . . . .	1	
8	35100-099-690	<b>SWITCH ASS'Y</b> , lighting . . . . .	1	
9	35110-094-620 XL	<b>PLATE</b> , switch lighting setting (Ivory white) . . . . .	1	
10	37200-117-620	<b>SPEEDOMETER ASS'Y</b> (Veglia) . . . . .	1	
11	37203-117-620	<b>SCREW</b> , speedometer ass'y . . . . .	1	
12	37210-117-620	<b>HOLDER</b> , speedometer setting . . . . .	1	
13	51516-099-621	<b>STAY</b> , headlight . . . . .	1	
14	61301-094-620 XL	<b>CASE</b> , headlight (Ivory white) . . . . .	1	
15	90310-099-003	<b>NUT</b> , thin, speedometer . . . . .	1	
16	92000-06012	<b>BOLT</b> , hex., 6 x 12 . . . . .	2	
17	94001-04000	<b>NUT</b> , hex., 4 mm . . . . .	1	
18	94111-06000	<b>WASHER</b> , fan 6 mm . . . . .	2	



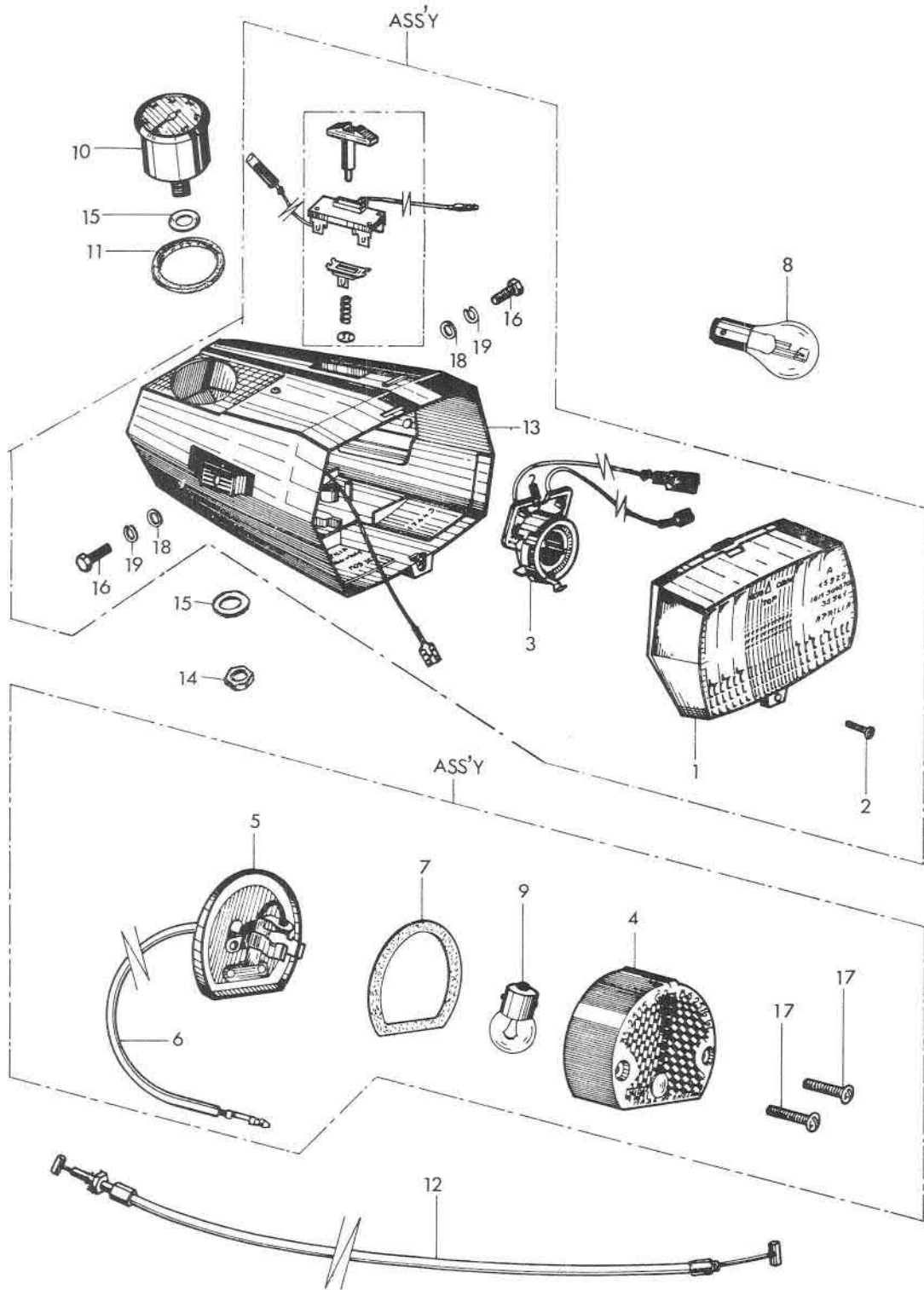


Ref. N°	Part N°	Description	Q T Y	Remarks
1	33100-099-621	<b>LIGHT ASS'Y</b> , head (Soubitez)	1	Ass'y
2	33105-099-620	<b>CORD</b> , switch headlight	1	
3	33108-099-620	<b>CLAMP</b> , lens setting	1	
4	33121-099-621	<b>LENS</b> , headlight	1	
5	33130-099-620	<b>SOCKET</b> , headlight	1	
6	34901-050-621	<b>BULB</b> , headlight (6V 6W)	1	(Yellow)
7	34902-099-620	<b>EARTH</b> , headlight	1	
8	35100-099-620	<b>SWITCH ASS'Y</b> , lighting	1	
○ 9	37210-117-620	<b>HOLDER</b> , speedometer setting	1	
○ 10	37200-117-620	<b>SPEEDOMETER ASS'Y</b> (Veglia)	1	
○ 11	37203-117-620	<b>SCREW</b> , speedometer ass'y	1	
12	51516-099-621	<b>STAY</b> , headlight	1	
13	61301-099-621 XL	<b>CASE</b> , headlight (Ivory white)	1	
14	92000-06012	<b>BOLT</b> , hex., 6 x 12)	2	
15	94001-04000	<b>NUT</b> , hex., 4 mm	1	
16	94111-06000	<b>WASHER</b> , fan 6 mm	2	
○ 17	90310-099-003	<b>NUT</b> , thin, speedometer	1	

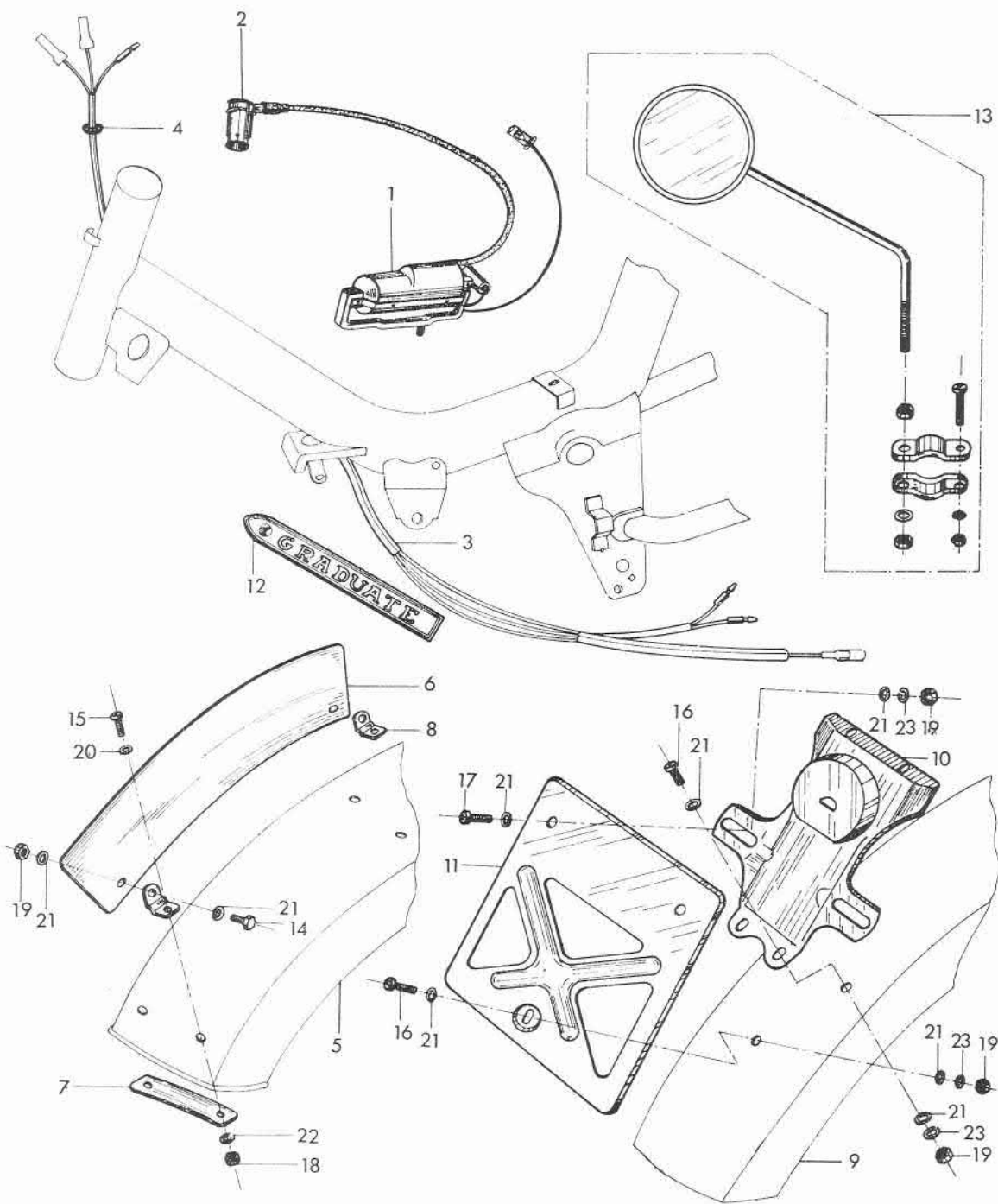


**P F 5 0 S t    F - 1 3    BASKET HOOK - FRONT & REAR CARRIER    H O N D A**

Ref. N°	Part N°	Description	QTY	Remarks
1	08101-093-099	<b>BASKET</b> . . . . .	1	
2	81200-093-000	<b>CARRIER, front</b> . . . . .	1	
3	81200-099-890	<b>CARRIER, rear</b> . . . . .	1	
4	81201-099-890	<b>BRACKET, rear carrier setting</b> . . . . .	2	
5	81221-044-811	<b>HOOK, A, basket</b> . . . . .	1	
6	81222-044-810	<b>HOOK, B, basket</b> . . . . .	2	
7	87900-044-690	<b>PLATE, ornament, right</b> . . . . .	1	NL only
	87900-044-690	<b>PLATE, ornament, left</b> . . . . .	1	NL only
8	92000-06012	<b>BOLT, hex., 6 x 12</b> . . . . .	2	
9	92000-08025	<b>BOLT, hex., 8 x 25</b> . . . . . (Used for machines without carrier)	1	
	92000-08032	<b>BOLT, hex., 8 x 32</b> . . . . . (Used for machines with carrier)	1	
10	93500-06012	<b>SCREW, cross, 6 x 12</b> . . . . .	2	
11	93500-06018	<b>SCREW, pan, 6 x 18</b> . . . . .	4	
12	94001-06000	<b>NUT, hex., 6 mm</b> . . . . .	8	
13	94001-08000	<b>NUT, hex., 8 mm</b> . . . . .	1	
14	94101-06000	<b>WASHER, plain, 6 mm</b> . . . . .	10	
15	94101-08000	<b>WASHER, plain, 8 mm</b> . . . . .	2	
16	94111-08000	<b>WASHER, spring, 8 mm</b> . . . . .	1	



Ref. N°	Part N°	Description	Q T Y	Remarks
	33100-099-600	<b>LIGHT</b> , ass'y head (Aprilia) . . . . .	1	No bulb
1	33121-099-600	<b>LENS</b> , headlight . . . . .	1	
2	33122-099-159	<b>SCREW</b> , lens headlight 3 x 12 mm . . . . .	1	
3	33130-099-600	<b>SOCKET</b> , headlight . . . . .	1	
○	33700-099-601	<b>LIGHT</b> , ass'y tail (Wipac) . . . . .	1	ASS'Y + bulb
○ 4-1	33701-099-601	<b>LENS</b> , taillight . . . . .	1	PF50 FN° A44268 →
5	33705-099-600	<b>PLATE</b> , taillight lens holder . . . . .	1	
6	33708-099-600	<b>CORD</b> , taillight . . . . .	1	
7	33709-099-600	<b>PACKING</b> , lens taillight . . . . .	1	
○ 8-1	34901-001-812	<b>BULB</b> , headlight (6V 15/15W) . . . . .	1	PF50 FN° A16210 → A61346
	34901-099-600	<b>BULB</b> , headlight (6V 18/18W) . . . . .	1	PF50 FN° A61347 →
9	34906-099-600	<b>BULB</b> , taillight (6V6W) . . . . .	1	
○ 10-1	37200-117-600	<b>SPEEDOMETER</b> , Miles/h (Veglia) . . . . .	1	
○ 11-1	37202-099-003	<b>JOINT</b> , speedometer (Veglia) . . . . .	1	
	37202-099-000	<b>JOINT</b> , speedometer (Koot) . . . . .	1	
○ 12-1	43450-099-680	<b>CABLE</b> , rear brake (Without stop sw.) . . . . .	1	PF50 FN° A16210 → A71047
	43450-099-681	<b>CABLE</b> , rear brake (Without stop sw.) . . . . .	1	PF50 FN° A71048 →
○ 13-1	61301-099-600 XL	<b>CASE</b> , headlight (Ivory White) . . . . .	1	
○ 14	90310-099-003	<b>NUT</b> , thin speedometer . . . . .	1	
○ 15	90548-099-003	<b>WASHER</b> , plain 10 mm . . . . .	2	
16	92000-06020	<b>BOLT</b> , hex., 6 x 20 . . . . .	2	
17	93500-05022	<b>SCREW</b> , panhead 5 x 22 . . . . .	2	
18	94101-06000	<b>WASHER</b> , plain 6 mm . . . . .	2	
19	94111-06000	<b>WASHER</b> , spring 6 mm . . . . .	2	



**P F 5 0 S † F - 15 Bracket Number Plate - Mirror - Number Plate (GB) H O N D A**

Ref. N <sup>o</sup>	Part N <sup>o</sup>	Description	QTY	Remarks
1	30500-099-004	<b>COIL IGNITION</b> . . . . .	1	
2	30700-063-681	<b>CAP</b> , ass'y noise suppressor . . . . .	1	
3	32100-099-600	<b>HARNESS</b> , wire . . . . . (Used in GB)	1	
4	32983-063-000	<b>GROMMET</b> , wire cord . . . . .	2	
○ 5	61100-099-600 CB	<b>FENDER</b> , front (Cambridge Blue) . . . . .	1	
	61100-099-600 XL	<b>FENDER</b> , front (Yvory white) . . . . .	1	
	61130-099-600	<b>NUMBER PLATE</b> , front comp. . . . . (Complete set)	1	
6*		<b>NUMBER PLATE</b> , front . . . . .	1	
7*		<b>WASHER</b> , number plate setting . . . . .	2	
8*		<b>BRACKET</b> , front, number plate . . . . .	4	
○ 9	80100-099-600 CB	<b>FENDER</b> , rear (Cambridge blue) . . . . .	1	
	80100-099-600 XL	<b>FENDER</b> , rear (Yvory white) . . . . .	1	
10	84701-099-600 B	<b>BRACKET A</b> , number plate (Black) . . . . .	1	
11	84702-099-600 B	<b>BRACKET B</b> , number plate (Black) . . . . .	1	
12	87123-099-600	<b>EMBLEM</b> , frame R/H . . . . .	1	
	87124-099-600	<b>EMBLEM</b> , frame L/H . . . . .	1	
13	88120-099-000	<b>BLACK MIRROR</b> , Left comp. . . . . (Optional part)	1	
14	92000-06012	<b>BOLT</b> , hex., 6 x 12 . . . . .	2	
15	93500-04012	<b>SCREW</b> , cross 4 x 12 . . . . .	4	
16	93500-06012	<b>SCREW</b> , panhead 6 x 12 . . . . .	3	
17	93500-06015	<b>SCREW</b> , panhead 6 x 15 . . . . .	2	
18	94001-04000	<b>NUT</b> , hex., 4 mm . . . . .	4	
19	94001-06000	<b>NUT</b> , hex., 6 mm . . . . .	7	
20	94101-04000	<b>WASHER</b> , plain 4 mm . . . . .	4	
21	94101-06000	<b>WASHER</b> , plain 6 mm . . . . .	14	
22	94111-04000	<b>WASHER</b> , spring 4 mm . . . . .	4	
23	94111-06000	<b>WASHER</b> , spring 6 mm . . . . .	5	

\* Not available separately.



# INDEX

## for engine and frame

### P F 5 0 S T

Part No	Part No	Part No	Part No
<b>8000</b>	12191-081-000 . . . 7	13040-044-000 . . . 15	14311-081-010 . . . 15
08101-093-099 . . . 51	12200-081-000 . . . 7	13101-081-000 . . . 15	14315-081-000 . . . 9
	12210-081-000 . . . 7	13102-081-000 . . . 15	14401-081-000 . . . 11
	12210-081-010 . . . 7	13103-081-000 . . . 15	14411-081-000 . . . 11
	12251-081-000 . . . 7	13104-081-000 . . . 15	14431-081-000 . . . 11
<b>11000</b>	12301-081-000 . . . 7	13105-081-000 . . . 15	14451-081-000 . . . 11
11100-081-010 . . . 17	12301-081-040 . . . 7	13111-044-010 . . . 15	14500-081-000 . . . 11
11191-081-000 . . . 17	12301-081-050 . . . 7	13115-044-000 . . . 15	14541-081-000 . . . 11
11200-081-010 . . . 17	12301-081-060 . . . 23	13201-063-300 . . . 15	14711-081-000 . . . 11
11200-081-020 . . . 23	12391-081-000 . . . 7	13211-044-030 . . . 15	14711-081-010 . . . 11
11215-081-000 . . . 23	12391-081-010 . . . 7	13311-081-310 . . . 15	14721-081-000 . . . 11
11218-081-000 . . . 23	12391-081-040 . . . 23	13321-063-310 . . . 15	14721-081-010 . . . 11
11331-081-000 . . . 9		13381-063-300 . . . 15	14731-081-000 . . . 11
11394-081-010 . . . 9			14751-081-000 . . . 11
11431-063-000 . . . 17	<b>13000</b>		14771-081-000 . . . 11
	13000-081-010 . . . 15	<b>14000</b>	14771-081-010 . . . 11
	13010-044-000 . . . 15	14101-081-010 . . . 11	14791-081-000 . . . 11
<b>12000</b>	13020-044-000 . . . 15	14101-081-020 . . . 23	14920-081-020 . . . 7
12100-081-010 . . . 7	13030-044-000 . . . 15	14105-081-010 . . . 11	14935-081-010 . . . 7
			14945-081-010 . . . 7
			14950-099-000 . . . 29

Part No°	P.	Part No°	P.	Part No°	P.	Part No°	P.
<b>15000</b>		<b>22000</b>		32100-099-620	43	<b>40000</b>	
15331-035-000	23	22100-081-000	9	32956-063-300	17	40215-099-630	35
15332-035-000	23	22131-081-000	9	32957-063-010	17	40220-093-000	35
15381-081-000	23	22201-044-050	9	32983-063-000	43	40225-099-630	35
15382-081-000	23	22300-081-000	9	32983-063-000	55	40230-093-000	35
15650-040-000	9	22802-044-000	9			40235-093-000	35
				<b>33000</b>		40510-099-000	39
		<b>23000</b>		33100-099-159 XL	45	40530-099-620	39
<b>16000</b>		23110-081-020	9	33100-099-930	4/	40530-099-690	39
16100-099-602	19	23211-081-000	13	33105-094-620	47	40531-099-003	39
16100-099-691	19	23220-081-010	13	33105-099-620	49	40543-099-000	43
16118-063-004	19	23801-081-000	13	33108-099-620	47	<b>41000</b>	
16118-063-004	19	23801-081-000	13	33108-099-620	49	41201-099-010	41
16119-063-004	19			33121-099-159	45	41201-099-620	41
16122-063-004	19	<b>24000</b>		33121-099-621	47	41201-099-690	41
16123-063-004	21	24111-081-000	13	33122-099-159	45		
16126-063-014	19	24611-081-010	9	33130-099-159	45	<b>42000</b>	
16127-063-014	19	24612-063-000	9	33130-099-620	47	42301-099-003	41
16133-081-004	21	24621-081-000	13	33700-099-000	45	42600-099-000	41
16133-081-690	21			33700-099-620	45	42601-099-003	41
16141-063-004	19	<b>28000</b>		33700-099-690	45	42602-099-003	41
16151-063-004	19	28802-081-000	13	33701-064-621	45	42603-099-003	41
16151-063-690	19	28802-081-020	13	33701-064-690	45	42610-099-003	41
16156-044-004	19	28811-081-000	13	33702-064-620	45	42620-099-130	41
16157-044-004	19	28813-081-000	13	33705-064-690	45	42701-099-000	41
16162-044-004	19	28815-081-000	13	33708-099-000	45		
16163-063-004	19	28815-081-010	13	33709-094-000	45	<b>43000</b>	
16164-225-004	19	28817-081-000	13	33712-099-000	45	43050-099-003	41
16171-044-004	19	28817-081-030	13	33741-099-303	31	43100-093-003	41
16173-063-004	19			33744-099-303	31	43450-099-000	29
16176-551-004	19	<b>30000</b>				43450-099-680	29
16181-001-004	19	30202-063-004	17	<b>34000</b>		43450-099-681	29
16181-250-004	19	30205-816-004	17	34901-099-600	53	43450-099-680	53
16185-044-004	19	30207-063-004	17	34901-050-621	47	43450-099-681	53
16189-056-004	19	30208-063-004	17	34901-063-690	47	43450-099-930	29
16194-063-004	19	30209-063-004	17	34902-099-620	47		
16196-063-014	19	30500-099-004	43	34906-093-000	45	<b>44000</b>	
16197-063-004	19	30500-099-004	55	34906-099-600	53	44301-093-003	33
16265-081-000	7	30541-063-004	17			44302-093-003	33
16267-081-000	7	30700-063-681	43	<b>35000</b>		44303-093-003	33
16950-099-159	37	30700-063-681	55	35100-099-650	47	44311-093-003	33
16950-099-930	37			35110-094-620 XL	47	44600-099-000	33
		<b>31000</b>				44601-093-003	33
<b>17000</b>		31100-081-601	17	<b>37000</b>		44610-093-000	33
17200-081-000	35	31100-081-602	17	37200-099-003	45	44701-099-000	33
17205-063-020	35	31100-099-620	17	37200-117-600	53	44711-099-158	33
17225-063-020	35	31100-063-621	17	37200-117-620	47	44711-099-158	41
17227-063-010	35	31100-099-690	17	37202-099-000	45	44712-099-158	33
17251-081-000	35	31121-081-601	17	37202-099-000	53	44713-099-158	33
17251-044-010	35	31121-081-602	17	37202-099-000	45	44713-099-158	41
17253-081-000	35	31121-099-620	17	37202-099-003	45	44800-099-000	33
17500-099-010	37	31121-063-621	17	37202-099-003	45	44800-099-003	33
17620-093-000	37	31121-099-690	17	37202-099-003	53	44807-093-000	33
17651-099-000	37	31631-081-601	17	37203-117-620	47	44830-094-179	45
17722-099-000	37	31631-081-602	17	37210-117-620	47	44830-099-003	45
17910-099-000	29	31631-063-621	17				
		<b>18000</b>		<b>38000</b>		<b>45000</b>	
18291-044-020	37	18300-081-020	37	38100-099-600	27	45100-093-003	33
18351-099-020 B	37	18400-081-020	37	38110-027-610	29	45110-093-003	33
18400-081-020	37	18401-063-000	37	38700-050-620	29	45120-093-003	33
		<b>32000</b>					
		32100-099-000	43				
		32100-099-600	55				

Part No	P.	Part No	P.	Part No	P.	Part No	P.
45120-093-003	41	61301-099-159 XL	45	<b>87000</b>		90609-031-000	35
45131-093-003	33	61301-099-600 XL	53			90709-031-000	35
45131-093-003	41	61301-094-620 XL	47	87121-099-000	43	90719-081-000	15
45133-093-003	33	61301-099-621 XL	49	87122-099-000	43	90741-044-000	15
45133-093-003	41			87123-099-000	43	90921-044-000	9
45410-093-003	33			87123-099-600	55		
45410-093-003	41	<b>77000</b>		87124-099-600	55		
45450-093-000	29	77100-099-000	39	37200-117-620	49	<b>91000</b>	
		77111-044-010	39	37203-117-620	49	91101-205-010	15
<b>50000</b>		77123-044-300	39	37210-117-620	49	91203-081-005	13
50100-099-000	43	77125-044-300	39	87900-099-690	27	91211-044-000	15
50301-093-003	2/	77127-044-020	39	87900-044-690	51	91212-063-005	9
50500-099-010	39	77131-044-000	39			91301-216-000	7
50522-099-000	39	77133-044-020	39	<b>88000</b>		91311-044-000	9
50524-023-000	37	77135-044-000	39	88120-099-000	55		
						<b>92000</b>	
<b>51000</b>		<b>80000</b>		<b>89000</b>		92800-12000	17
51500-099-000	31	80100-099-010 XL	39	89100-093-000	39		
51500-099-010	31	80100-099-600	39	89101-063-000	39	<b>93000</b>	
51500-099-303	31	80100-099-600 CB	55			93500-06014	23
51505-093-000 B	31	80100-099-600 XL	55	<b>90000</b>			
51510-099-000	31	80100-099-690 XL	39	90012-081-010	11	<b>94000</b>	
51510-099-010	31	80111-099-000	39	90081-044-000	23	94101-11000	33
51510-099-303	31	80112-099-000	39	90111-099-000	39	94111-03000	21
51516-093-000	29	80113-099-000	39	90114-093-003	29	94111-04000	21
51516-099-621	47	80121-099-000	37	90131-093-000	45		
51516-099-621	49			90201-044-000	17		
51517-093-000	29	<b>81000</b>		90201-093-000	27		
51518-093-000	31	81200-093-000	51	90202-093-000	39	<b>95000</b>	
51520-099-000	31	81200-099-890	51	90706-023-000	11	95001-35140	21
51520-099-010	31	81201-099-890	51	90231-816-000	9	95001-54575	37
51530-099-000	31	81221-044-811	51	90300-099-000	39	94510-20000	13
51530-099-010	31	81222-044-810	51	90302-093-000	27	94520-10000	13
51602-093-000	31			90301-093-003	27		
51602-093-303	31	<b>83000</b>		90310-099-003	45	<b>96000</b>	
		33100-099-600	53	90310-099-003	49	96100-62020	15
<b>53000</b>		33100-099-621	49	90310-099-620 XL	47	96100-62030	15
53001-093-003 B	29	33121-099-600	53	90312-093-003	33	96100-60040	13
53001-093-013 B	29	33121-099-621	49	90312-099-003	33	96211-06000	41
53002-093-003 B	29	33122-099-159	53	90313-099-003	33	96211-07000	33
53100-099-000	29	33130-099-600	53	90313-099-003	41		
53111-093-000	29	33130-099-620	49	90314-093-003	33		
53112-093-000	29	83517-063-000	37	90315-099-003	41		
53141-093-003 B	29	83513-044-000	39	90407-259-000	17		
53152-093-003	29	83541-099-000	39	90426-001-000	17	<b>97000</b>	
53165-093-003 B	29	83600-117-000 XL	35	90434-816-000	9	97000-21000	41
53166-093-003 B	29	83600-117-000 GD	35	90445-081-000	11	97463-11214	33
53171-093-013	29	33700-099-601	53	90451-081-000	9	97524-21220	41
53172-093-013	29	33701-099-601	53	90451-081-000	13		
53173-093-003	29	33705-099-600	53	90456-081-000	9		
53173-093-013	29	33708-099-600	53	90461-081-000	13		
53175-093-003	29			90469-081-000	13	<b>98000</b>	
53178-093-003	29	<b>84000</b>		90471-081-000	23	98056-57710	11
53181-093-003	29	84208-099-690 XL	37	90488-044-000	23		
53211-093-003	27	84701-099-010 XL	37	90502-099-000	35		
53212-093-003	27	84701-009-600 B	55	90502-099-000	37	<b>99000</b>	
53213-093-003	27	84702-099-600 B	55	90504-099-000	29	99114-063-0500	21
53600-044-007	27	34901-050-621	49	90505-099-003	41	99114-063-0520	21
		34902-099-620	49	90511-216-670	11	99114-063-0550	21
<b>61000</b>				90520-099-003	41	99114-063-0580	21
61100-099-000 XL	27	<b>85000</b>		90521-099-003	33	99114-063-0600	21
61100-099-600 CB	55	35100-099-620	49	90522-099-000	41	99114-063-0620	21
61100-099-600 XL	55			90548-099-003	45	99114-063-0650	21
61100-099-691 XL	27			90548-099-003	53	99114-063-0680	21
61130-099-600	55			90607-081-000	7		

**HONDA MOTOR CO., LTD.**



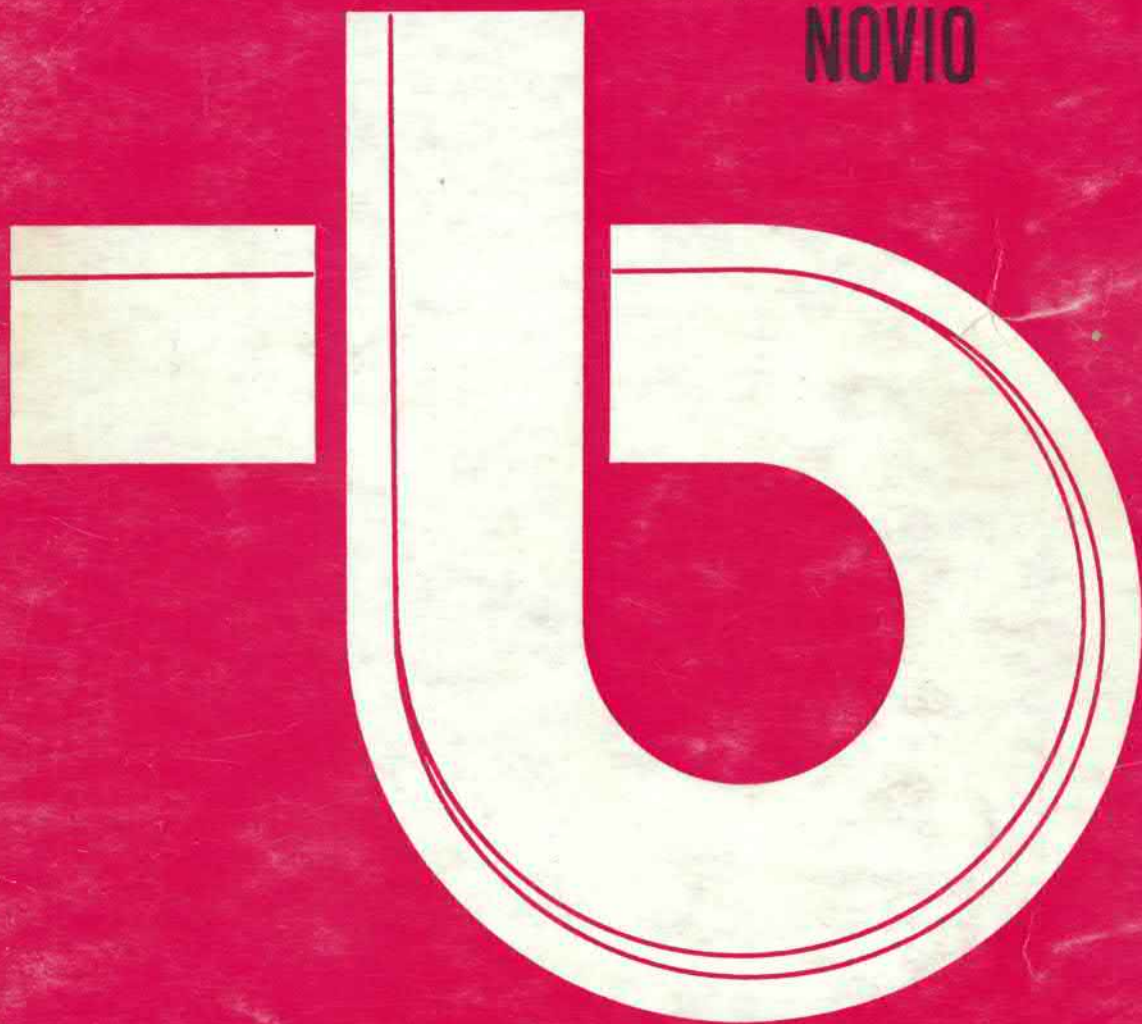
# HONDA



## 50

Model PF50

NOVIO



## PARTS LIST

HONDA GENUINE PARTS



# **HONDA 50**

**GENUINE PARTS**

***Model PF 50***  
***NOVIO***

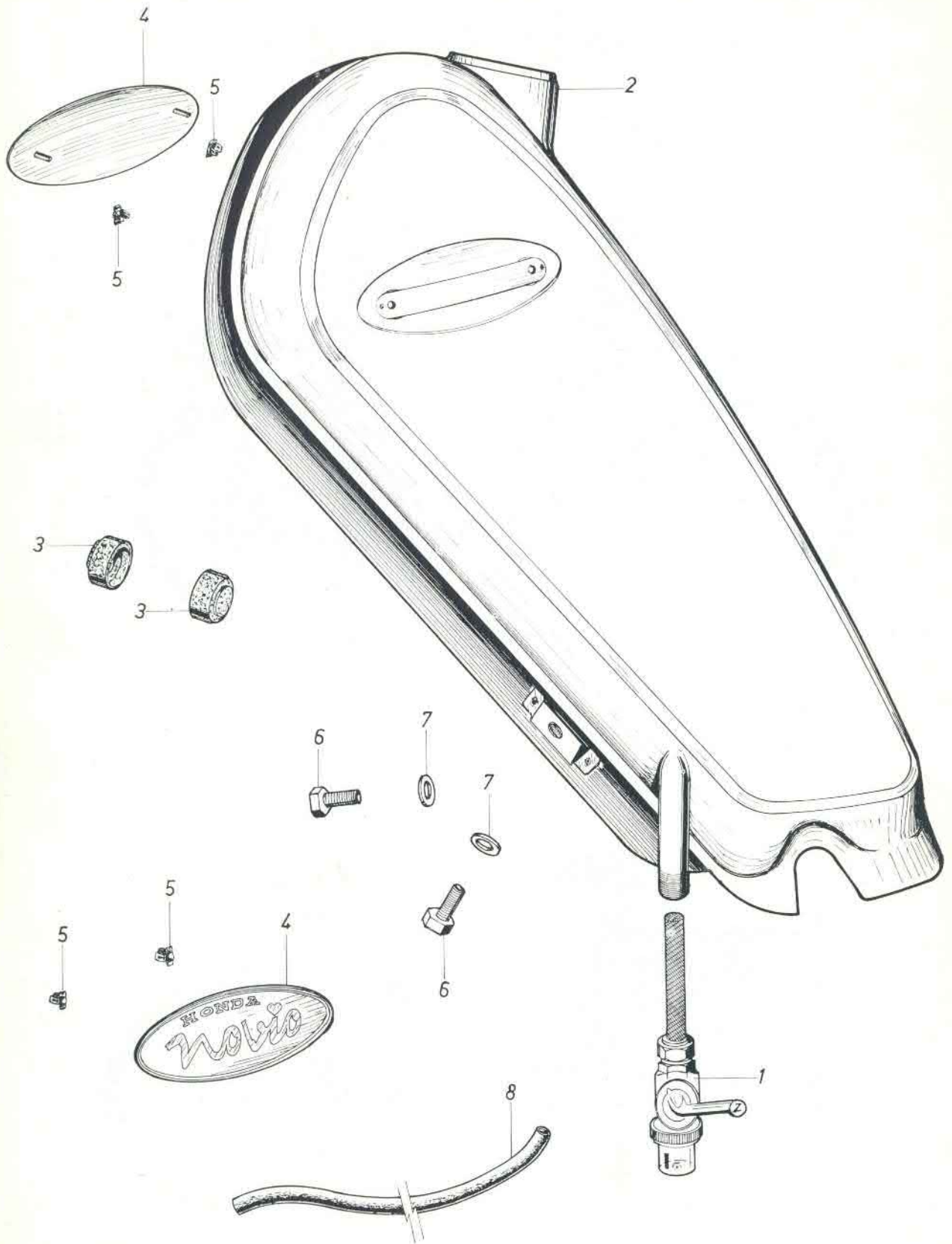
ADDENDUM N° 1 TO PF50 PARTS LIST

APRIL 1971

# PF50 NOVIO



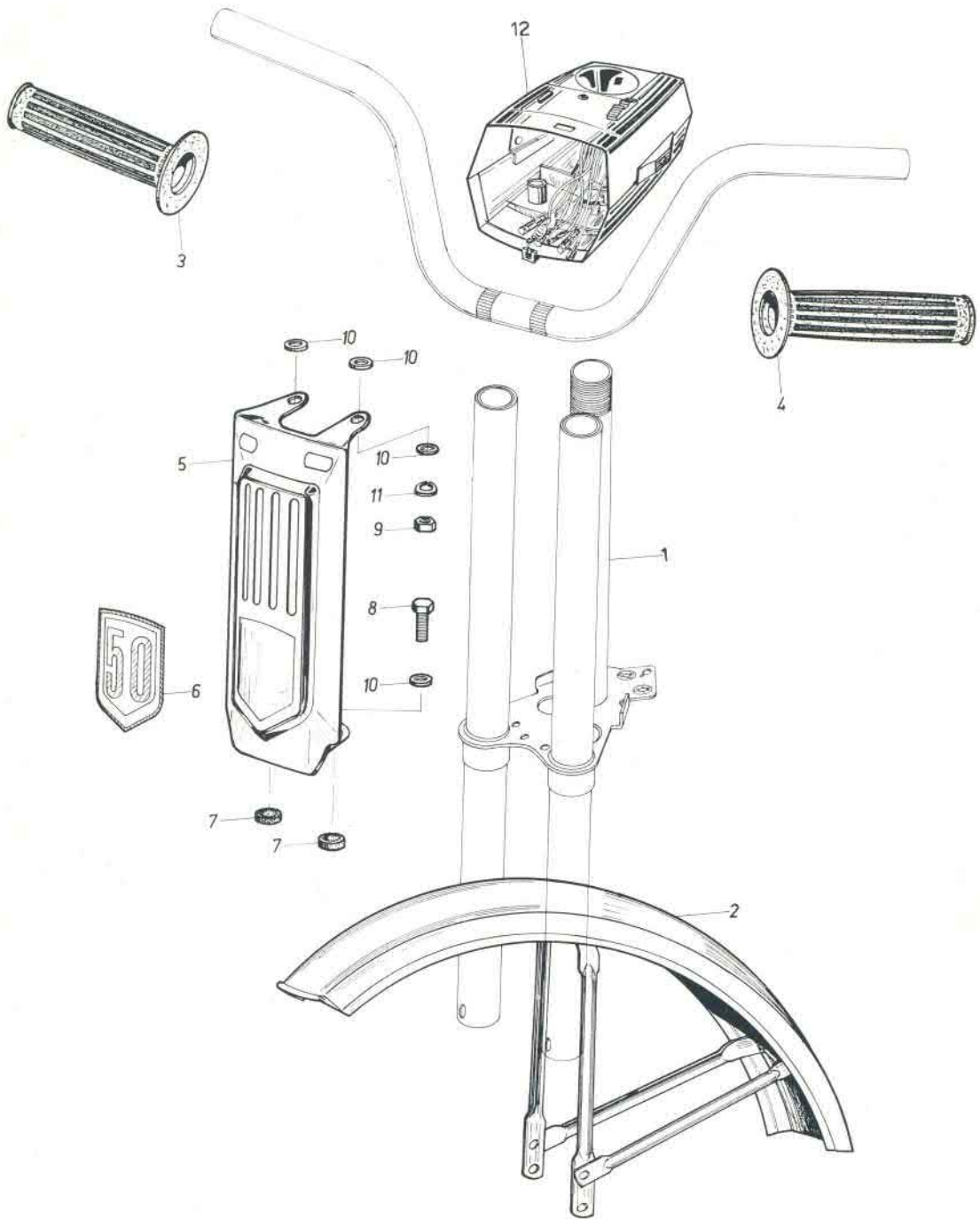


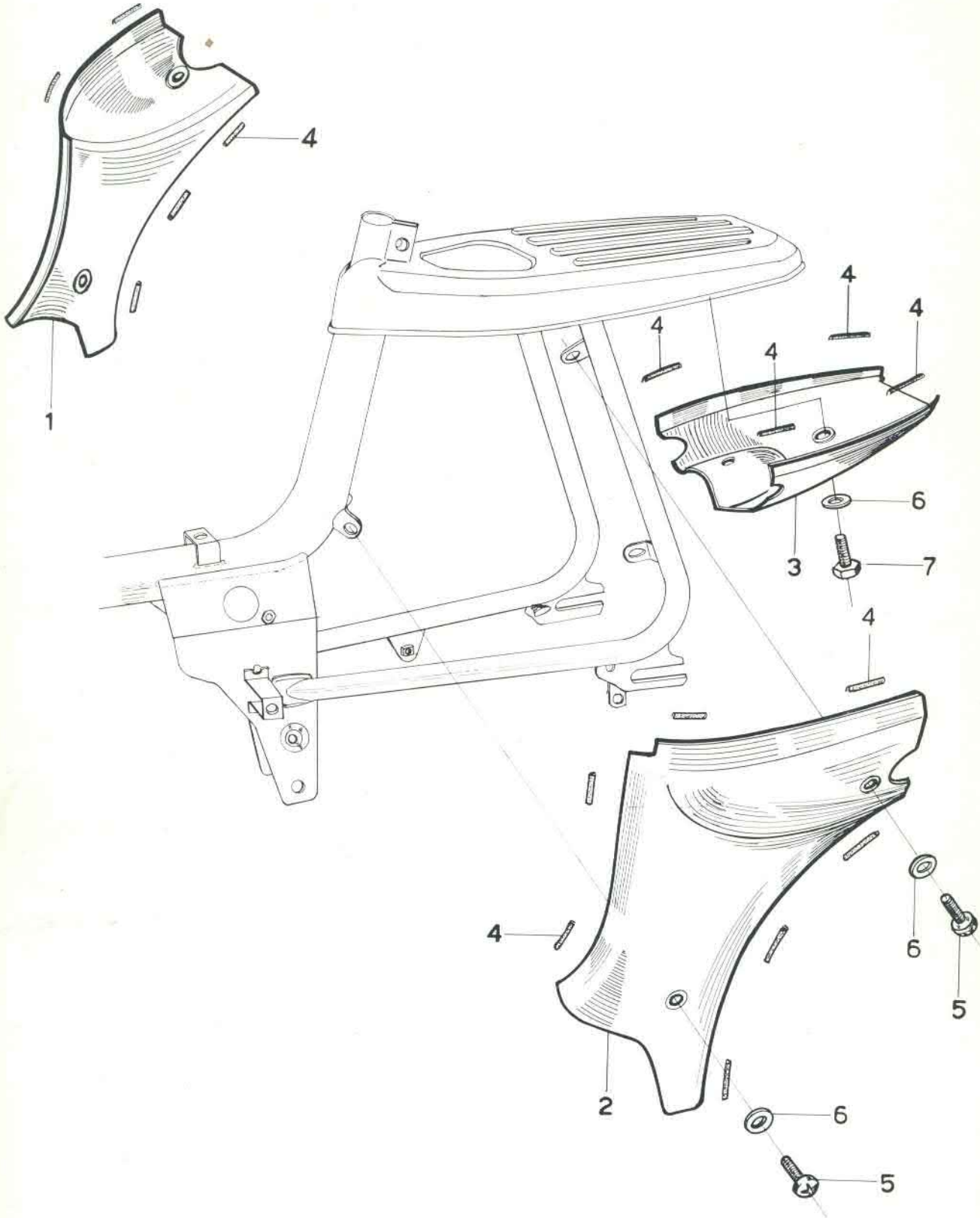




Ref. N <sup>o</sup>	Part N <sup>o</sup>	Description	Q T Y	Remarks
1	16950-117-159	<b>COCK ASS'Y</b> , fuel . . . . .	1	
2	17500-117-000AA	<b>TANK</b> , fuel (candy red) . . . . .	1	
	17500-117-000AB	<b>TANK</b> , fuel (candy blue) . . . . .	1	
3	17611-117-000	<b>CUSHION</b> , fuel tank, front . . . . .	2	
4	87123-117-000	<b>EMBLEM</b> , fuel tank . . . . .	2	
5	87311-516-000	<b>NUT CLAMP</b> , rear ornament . . . . .	4	
6	92000-06012	<b>BOLT</b> , hex. 6 x 12 . . . . .	2	
7	94101-06000	<b>WASHER</b> , plain 6 mm . . . . .	2	
8	95001-45140	<b>TUBE</b> , fuel 4,5 x 140 . . . . .	1	

Ref. No	Part No	Description	Q T Y	Remarks
	51500-099-010AA	<b>FORK</b> , Front Assy (candy red) . . .	1	
	51500-099-010AB	<b>FORK</b> , Front Assy (candy blue) . . .	1	
1	51510-099-010AA	<b>FORK FRONT</b> , (candy red) . . .	1	
	51510-099-010AB	<b>FORK FRONT</b> , (candy blue) . . .	1	
2	61100-117-000	<b>FENDER</b> , comp., front . . . . .	1	
3	53165-093-003W	<b>RUBBER</b> , right, grip (light grey) . . .	1	
4	53166-093-003W	<b>RUBBER</b> , left, grip (light grey) . . .	1	
5	64310-117-000AA	<b>COVER TOP</b> , front (candy red) . . .	1	
	64310-117-000AB	<b>COVER TOP</b> , front (candy blue) . . .	1	
6	87130-117-000	<b>EMBLEM</b> , cover top . . . . .	1	
7	90202-036-000	<b>COLLAR</b> , distance . . . . .	2	
8	92000-06012	<b>BOLT</b> , hex., 6 x 12 . . . . .	2	
9	94001-06000	<b>NUT</b> , hex., 6 mm . . . . .	2	
10	94101-06000	<b>WASHER</b> , plain 6 mm . . . . .	4	
11	94111-06000	<b>WASHER</b> , spring 6 mm . . . . .	2	
	33100-099-159GD	<b>LIGHT</b> , Ass'y head (donkey grey) . . .	1	Ass'y
12	61301-099-159GD	<b>CASE</b> , head light (donkey grey) . . .	1	





Ref. No	Part No	Description	Q T Y	Remarks
1	83540-117-000AA	<b>COVER R</b> , rear (candy red) . . . .	1	
	83540-117-000AB	<b>COVER R</b> , rear (candy blue) . . . .	1	
2	83640-117-000AA	<b>COVER L</b> , rear (candy red) . . . .	1	
	83640-117-000AB	<b>COVER L</b> , rear (candy blue) . . . .	1	
3	83740-117-000AA	<b>COVER</b> , tail (candy red) . . . . .	1	
	83740-117-000AB	<b>COVER</b> , tail (candy blue) . . . . .	1	
4a	83542-117-000	<b>STRIP</b> , 8 x 200 . . . . .	4	
4b	83543-117-000	<b>STRIP</b> , 8 x 160 . . . . .	1	
5	93500-06012	<b>SCREW</b> , pan. 6 x 12 . . . . .	4	
6	90502-099-000	<b>WASHER</b> , plain 6.5 mm x 18 x 1.5 . . . . .	5	
7	92000-06012	<b>BOLT</b> , hex., 6 x 12 . . . . .	1	

Ref. Nº	Part N°	Description	Q T Y	Remarks
1	40510-117-000AA	<b>CASE</b> , drive chain (candy red) . . .	1	
	40510-117-000AB	<b>CASE</b> , drive chain (candy blue) . . .	1	
2	40511-117-000	<b>PLATE</b> , chain case setting . . . . .	1	
3	50100-117-000AA	<b>BODY</b> , frame comp. (candy red) . . .	1	
	50100-117-000AB	<b>BODY</b> , frame comp. (candy blue) . . .	1	
4	50500-099-000B	<b>STAND, MAIN</b> (black) . . . . .	1	
5	801000-117-690	<b>FENDER</b> , rear . . . . .	1	NL
	80100-117-000	<b>FENDER</b> , rear . . . . .	1	
6	83600-117-000GD	<b>COVER</b> , engine (donkey grey) . . .	1	
7	90502-099-000	<b>WASHER</b> , plain 65 x 18 x 1,5 . . .	3	
8	93500-06012	<b>SCREW</b> , pan. 6 x 12 . . . . .	6	
9	92000-06012	<b>BOLT</b> , hex. 6 x 12 . . . . .	1	
10	94101-06000	<b>WASHER</b> , plain 6 mm . . . . .	4	

